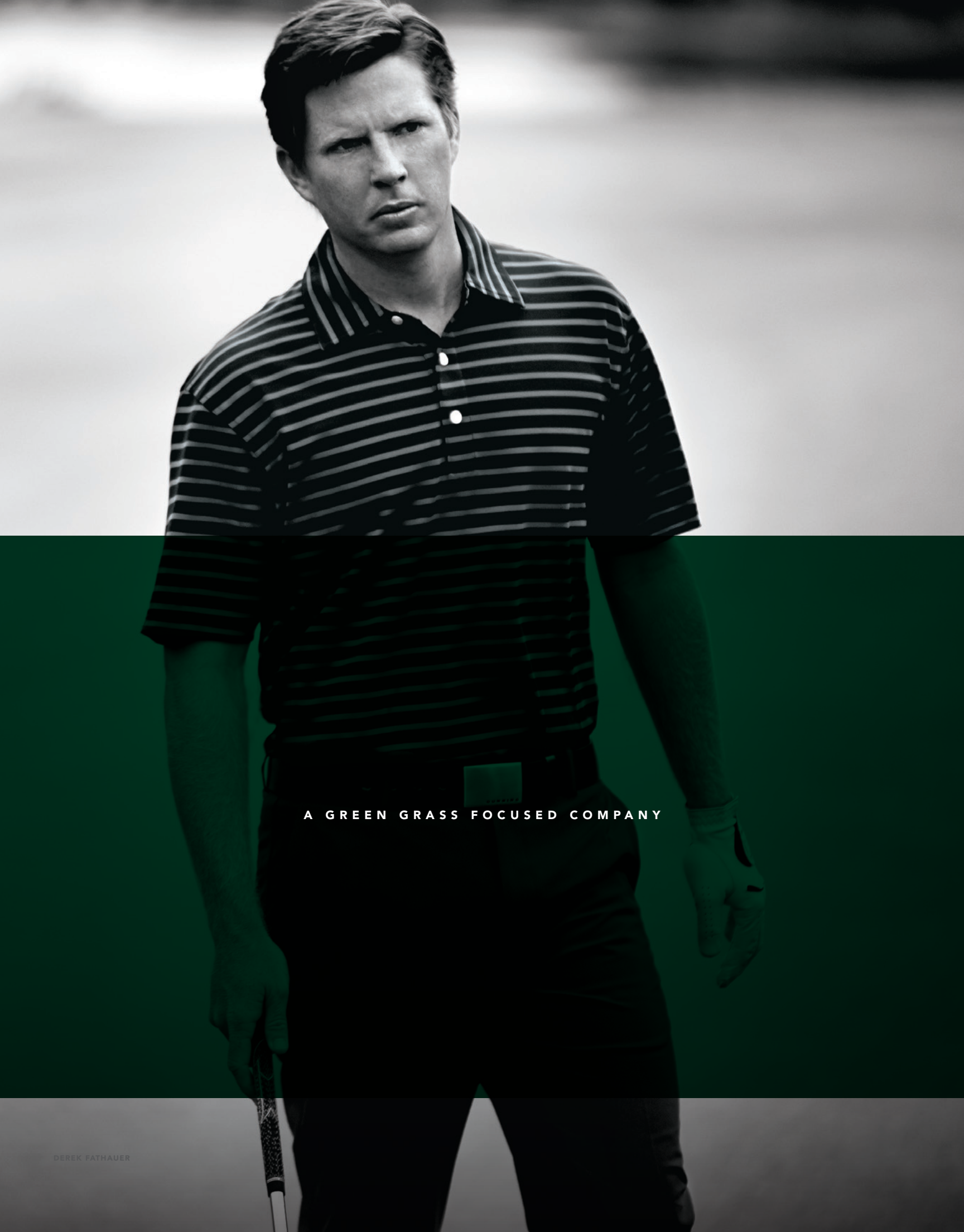




D U N N I N G
G O L F

SPRING | 2016



A GREEN GRASS FOCUSED COMPANY

D U N N I N G
G O L F

WHY DO BUSINESS WITH DUNNING

Green grass focused company

Believe in respecting the heritage of the game while evolving with the athletic side of the sport

Design and manufacture the most technical and highest quality product in the industry

A three tiered simplified pricing based on weight and design aesthetic

World class professional tour roster that fits our DNA

Designs that are clean, classic, and understated

Offer a merchandising solution that is simple and easy to show, sell, and position in any retail shop

We are a brand for the leaders in the club



D U N N I N G
G O L F

ROBERTO CASTRO

NICOLAS COLSAERTS

FRANKLIN CORPENING

DEREK FATHAUER

KEVIN FOLEY

FRED FUNK

JIM FURYK

DAVID HEARN

CHARLES HOWELL III

RUSSELL KNOX

SAM SAUNDERS

BRENDAN STEELE

NICOLAS COLSAERTS



ENGINEERED FOR ATHLETES | DESIGNED FOR PLAYERS™

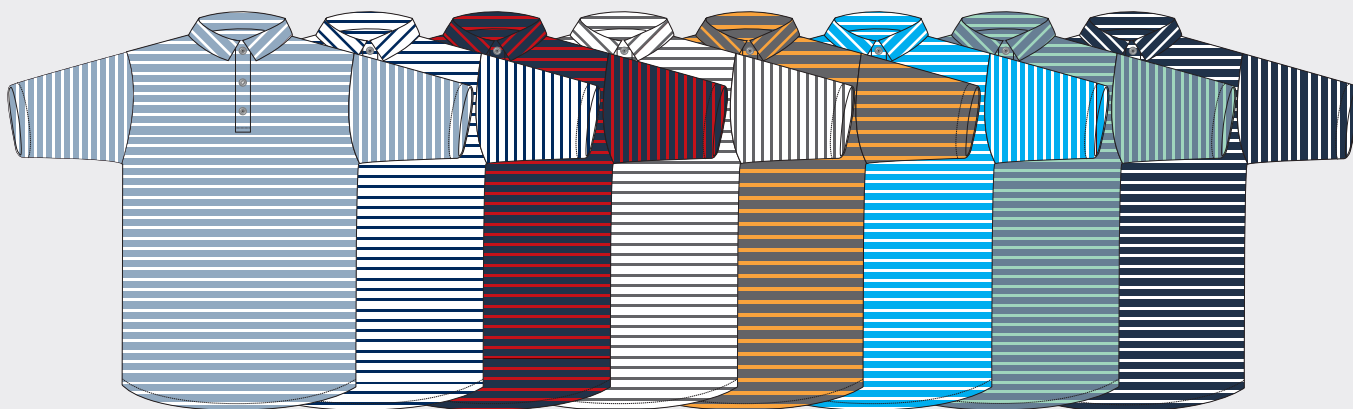
BRENDAN STEELE

SPRING | 2016

CLASSICS



K146



K314



K317

SPRING | 2016

CLASSICS



K131



K313

SPRING | 2016

TOUR ATHLETIC



K141



K137



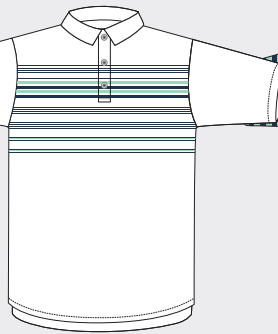
K323



K140



K141



K142



K323



K226



K323



K137



K132



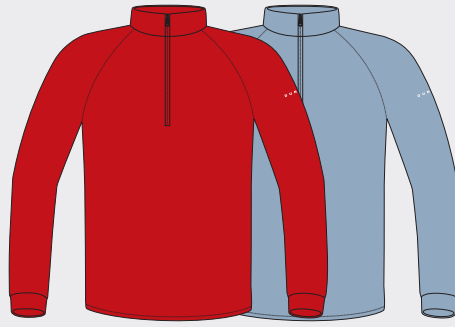
K323

SPRING | 2016

TOUR ATHLETIC



K908



S965



K226



K908



S965



K140



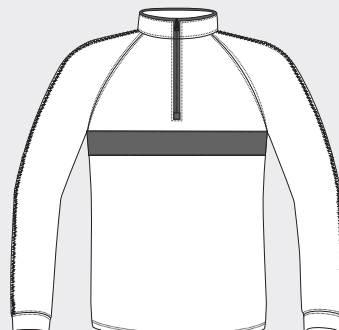
K132



K908



K142



K908

HALO

WHT

RED

MIDS

B EGL

HALO

WHT

FEST

ABAY

HALO

WHT

CHRC

HAWI

WHT

SPRING | 2016

GROUP 1



K146



K131



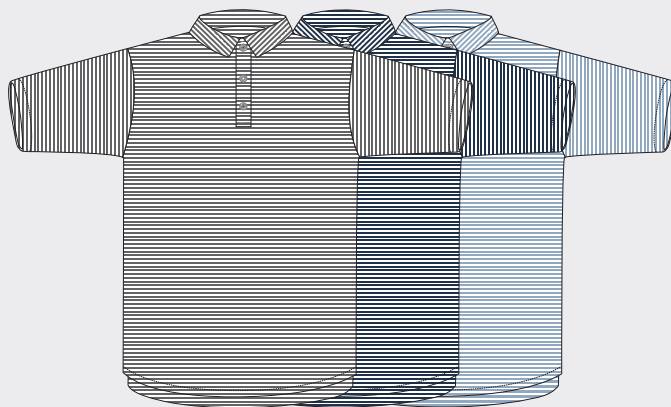
K319



K317



K314



K313

SPRING | 2016

GROUP 1

HALO
WHT
CHRC
RED
MIDS



K226



K323



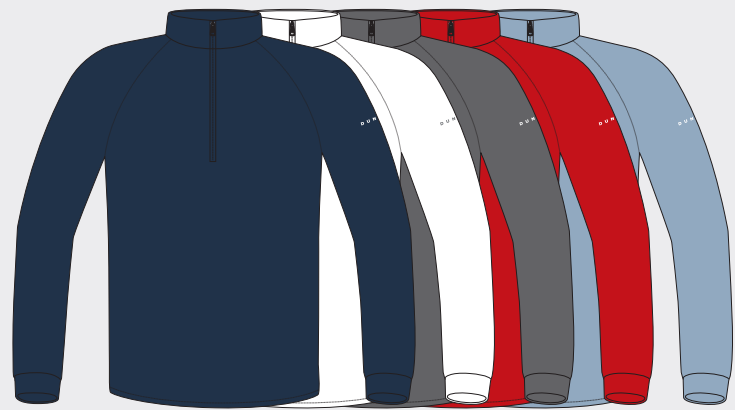
K137



K141



K908



S965

SPRING | 2016

GROUP 2



K146



K319



K313



K131



K317



K314

SPRING | 2016

GROUP 2

BGL

HALO

WHT

FEST



K226



K323



K140



K141



K142



K908



S965

SPRING | 2016

GROUP 3



K146



K131



K317



K314



K313

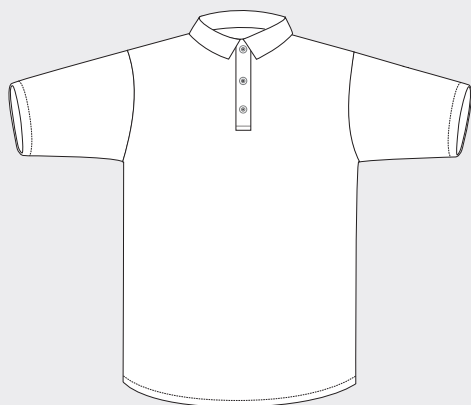
SPRING | 2016

GROUP 3

CHRC

HAWI

WHT



K226



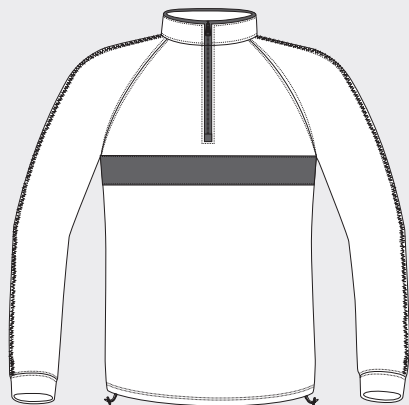
K323



K132



K142



K908



S965



V647

SPRING | 2016

GROUP 4



K146



K131



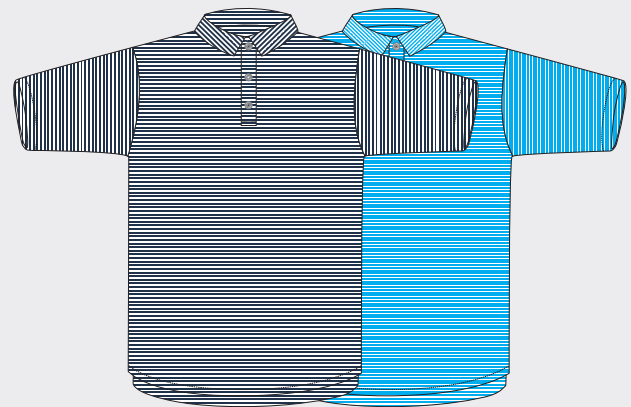
K319



K317



K314



K313

SPRING | 2016

GROUP 4

ABAY

HALO

WHT



K226



K323



K132



K140



K137



K908



S965



D7F15K131

SOLID PIQUE POLO

STRETCH PIQUE

98% TECHNICAL POLYESTER /

2% LYCRA

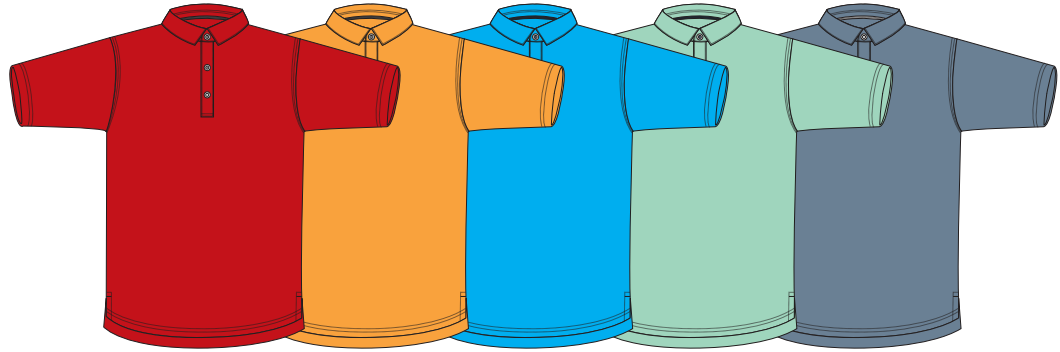
Dunning tonal logo on right sleeve

Back contrast neck tape

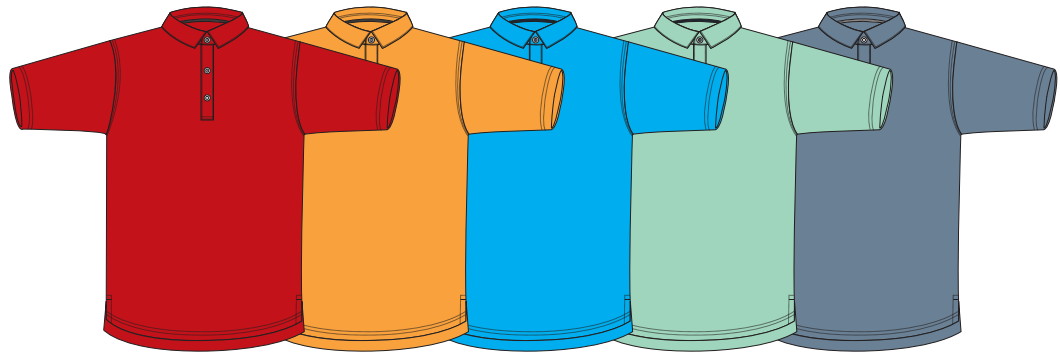
S-2X

S-3X / BLK, WHT, HALO

DGW0593



RED	RED
HAWI	HAWI
ABAY	A-BAY
BEGL	BEACH GLASS
FEST	FEATHERSTONE
CHRC	CHARCOAL
WHT	WHITE
HALO	HALO
MIDS	MID DUSK
BLK	BLACK



D7S16K146

**STRETCH JERSEY
BUTTON DOWN POLO**

88% TECHNICAL POLYESTER /
12% SPANDEX
Dunning tonal logo on right sleeve
S-2X
S-3X / BLK, WHT, HALO
DGW0593

CHRC	CHARCOAL
HALO	HALO
WHT	WHITE
RED	RED
MIDS	MID DUSK
BLK	BLACK
HAWI	HAWI
ABAY	A-BAY
BEGL	BEACH GLASS
FEST	FEATHERSTONE



D7S16K226

DIAMOND JACQUARD POLO

JACQUARD
100% POLYESTER
Dunning tab on right sleeve
S-2X
DGW0593

ABAY	A-BAY
HALO	HALO
BEGL	BEACH GLASS
WHT	WHITE



D7S15K314

STRIPE YD PIQUE POLO

STRETCH PIQUE
 100% TECHNICAL POLYESTER
 Dunning tab on right sleeve
 S-2X
 DGW0544



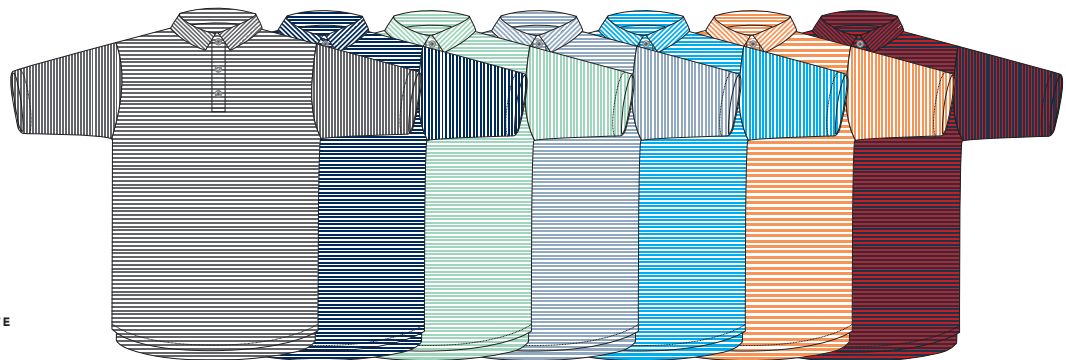
HARD	HALO / RED
WTCH	WHITE / CHARCOAL
HLWH	HALO / WHITE
WTHA	WHITE / HALO
MIDW	MID DUSK / WHITE
FEBG	FEATHERSTONE / BEACH GLASS
ABWH	A-BAY / WHITE
CRHW	CHARCOAL / HAWI



D7S15K313

STRIPE YD JERSEY POLO

STRETCH JERSEY
 93% POLYESTER / 7% SPANDEX
 Dunning tab on right sleeve
 S-2X
 DGW0544

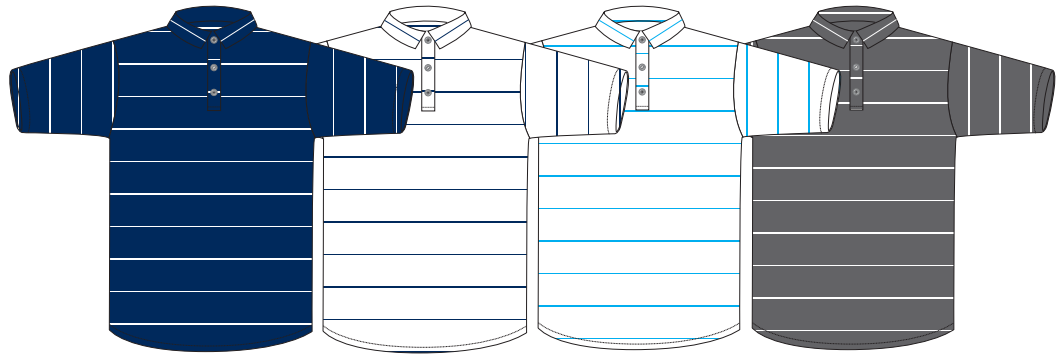


CHWH	CHARCOAL / WHITE
HLWH	HALO / WHITE
BEGW	BEACH GLASS / WHITE
MIDW	MID DUSK / WHITE
ABWH	A-BAY / WHITE
HAWH	HAWI / WHITE
RDHO	RED / HALO

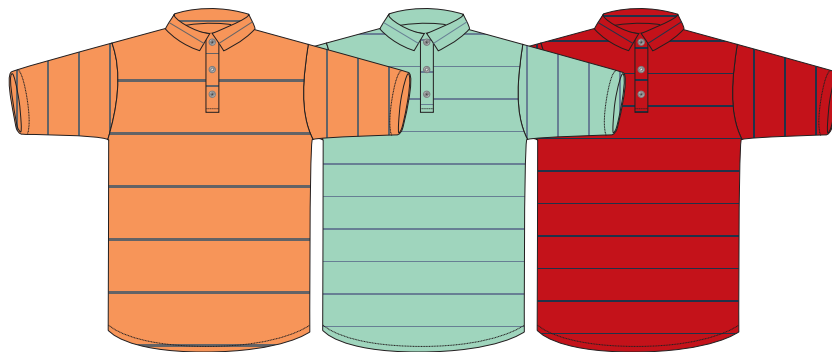
D7F15K317

YD STRIPE JERSEY POLO

STRETCH JERSEY
 93% POLYESTER / 7% SPANDEX
 Dunning tab on right sleeve
 S-2X
 DGW0544



HLWH	HALO / WHITE
WTHA	WHITE / HALO
WHWO	WHITE / A-BAY
CHWH	CHARCOAL / WHITE
HWCH	HAWI / CHARCOAL
BEGF	BEACH GLASS / FEATHERSTONE
RDHO	RED / HALO



D7S16K319

PIQUE COLLAR TIP POLO

STRETCH PIQUE
 98% TECHNICAL POLYESTER /
 2% LYCRA
 Dunning tonal logo on right sleeve
 S-2X
 DGW0544



HALO	HALO
RED	RED
FEST	FEATHERSTONE

D7S16K323

STRIPE PIQUE JERSEY POLO

PIQUE

100% TECHNICAL POLYESTER

Dunning tab on right sleeve

S-2X

DGW0593



RDHO	RED / HALO
HWCH	HAWI / CHARCOAL
ABHO	A-BAY / HALO
BEGH	BEACH GLASS / HALO

D7S16K137

ENGINEERED JERSEY POLO

STRETCH JERSEY

93% POLYESTER / 7% SPANDEX

Dunning tonal logo on right sleeve

S-2X

DGW0594



WHRC	WHITE / RED COMBO
WHAC	WHITE / A-BAY COMBO

D7S16K141

CHEST STRIPE PIQUE POLO

PIQUE

100% TECHNICAL POLYESTER

Dunning tonal logo on right sleeve

S-2X

DGW0594



HLCB	HALO COMBO
FECO	FEATHERSTONE COMBO

D7S16K140

ENGINEERED YOKE JERSEY POLO

STRECH JERSEY

93% POLYESTER / 7% SPANDEX

Dunning tonal logo on right sleeve

S-2X

DGW0594



HOAB

HALO / A-BAY

HABG

HALO / BEACH GLASS

D7S16K142

MULTI-COLOR ENGINEERED JERSEY POLO

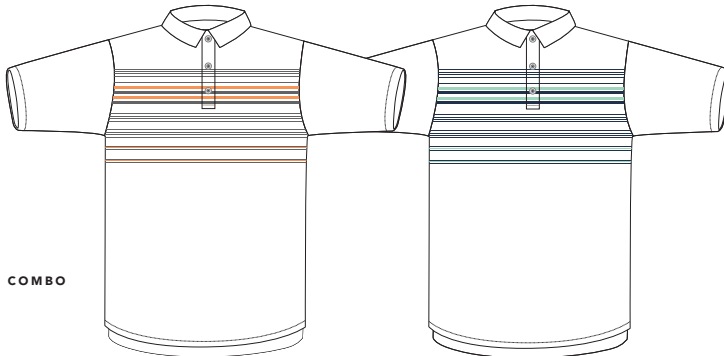
STRETCH JERSEY

93% POLYESTER / 7% SPANDEX

Dunning tonal logo on right sleeve

S-2X

DGW0594



WHWC

WHITE / HAWI COMBO

WBGC

WHITE / BEACH GLASS COMBO

D7S16K132

SINGLE STRIPE PIQUE POLO

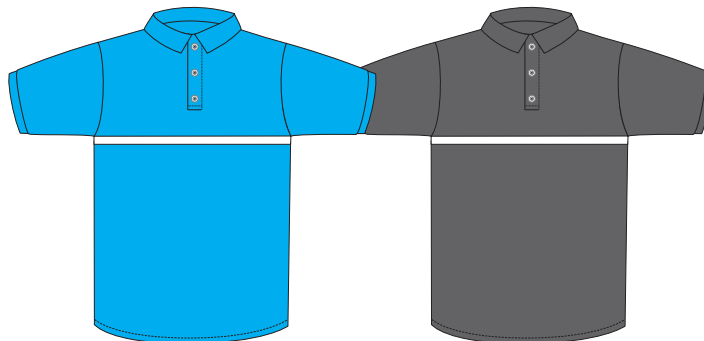
PIQUE

100% TECHNICAL POLYESTER

Dunning tonal logo on right sleeve

S-2X

DGW0594



ABWH

A-BAY / WHITE

CHWH

CHARCOAL / WHITE

D7F13K870

HEATHER STRETCH PIQUE POLO

STRETCH PIQUE

100% POLYESTER

Dunning tonal logo on back neck

S-2X

DGW0594



WHT	WHITE
BLK	BLACK
HALO	HALO
CHRC	CHARCOAL

D7S12S965

THERMAL 1/4 ZIP

THERMAL TERRY TWILL

94% POLYESTER / 6% SPANDEX

Dunning logo on left sleeve

S-2X

S-3X / BLK, HALO

DGW0544



BLK	BLACK
HALO	HALO
WHT	WHITE
CHRC	CHARCOAL
RED	RED
MIDS	MID DUSK
FEST	FEATHERSTONE

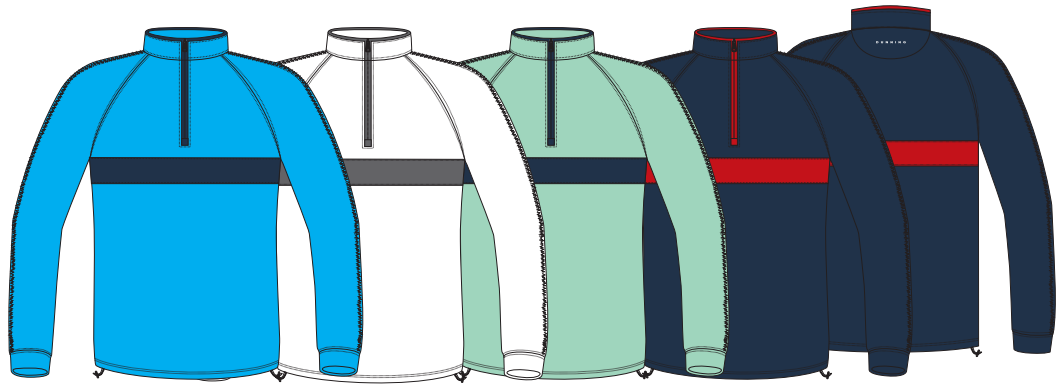


D7S16K908

CHEST STRIPE THERMAL 1/4 ZIP

THERMAL TERRY TWILL
 94% POLYESTER / 6% SPANDEX
 Dunning logo on back neck
 S-2X
 DGW0525

ABAY	A-BAY
WHT	WHITE
BEGL	BEACH GLASS
HALO	HALO

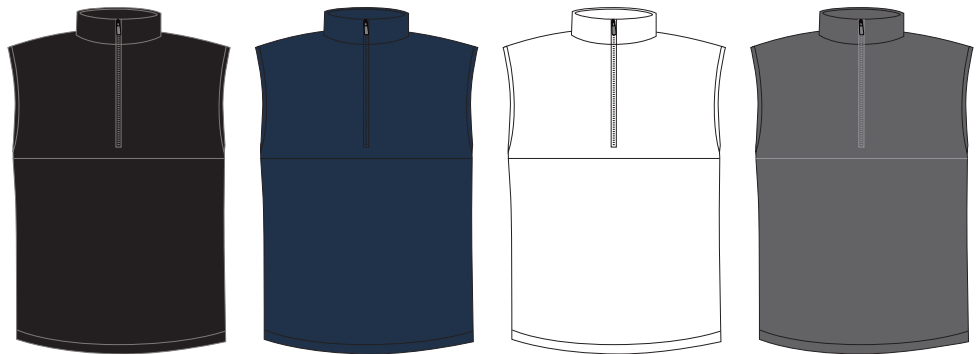


D7S13V647

THERMAL VEST

THERMAL TERRY TWILL
 94% POLYESTER / 6% SPANDEX
 Dunning logo on back neck
 S-2X
 S-3X / BLK, HALO
 DGW0593

BLK	BLACK
HALO	HALO
WHT	WHITE
CHRC	CHARCOAL

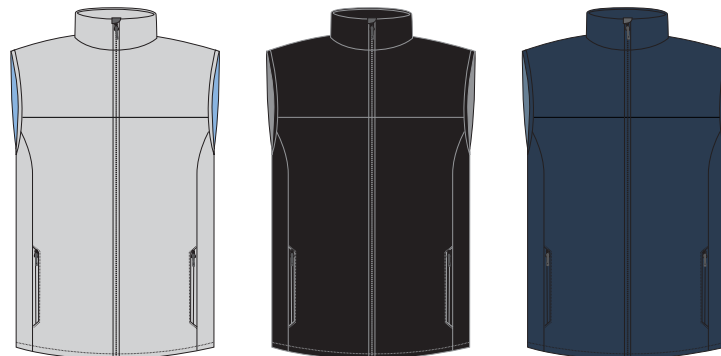


D7S15V100

BONDED FLEECE VEST

BONDED FLEECE
 66% POLYESTER / 31% TECHNICAL
 POLYESTER / 3% SPANDEX
 Dunning tonal logo on back neck
 S-2X
 DGW0578

LTGR	LIGHT GREY
BLK	BLACK
HALO	HALO



D7S15J100

BONDED FLEECE FZ JACKET

BONDED FLEECE
 31% TECHNICAL POLYESTER /
 66% POLYESTER / 3% SPANDEX
 Dunning tonal logo on left sleeve
 S-2X
 DGW0579



LTGR	LIGHT GREY
BLK	BLACK
HALO	HALO

D7F12S149

PLAYERS MERINO V-NECK

MERINO
 100% MERINO WOOL
 Dunning tonal logo on left sleeve
 S-2X
 DGW0526



BLK	BLACK
HALO	HALO
CHRC	CHARCOAL

D7F15S189

MERINO 1/4 ZIP

MERINO
 100% MERINO WOOL
 Dunning tonal logo on left sleeve
 S-2X
 DGW0576



BLK	BLACK
HALO	HALO
CHRC	CHARCOAL

D7F14K595

MERINO WINDSHIRT

MERINO
51% MERINO WOOL / 27% POLYESTER /
22% NYLON
Dunning logo on back neck
S-2X
DGW0576

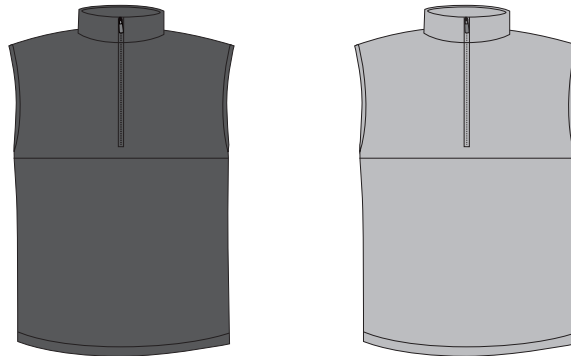


GRNT	GRANITE
LTGR	LIGHT GREY

D7F14V964

MERINO WIND VEST

MERINO
51% MERINO WOOL / 27% POLYESTER /
22% NYLON
Dunning logo on back neck
S-2X
DGW0594



GRNT	GRANITE
LTGR	LIGHT GREY

DUNNING

GOLF
BASE
LAYER

Engineered specifically for golf, the DUNNING BASE LAYER SYSTEM was created using the perfect weight of merino wool that will regulate your body temperature in any weather. Offered in three styles, it's the must-have addition to a players wardrobe.

NATURAL PERFORMANCE FEATURES

MOISTURE WICKING AND BREATHABLE

KEEPS YOU COOL IN THE SUMMER AND WARM IN THE WINTER

ANTIMICROBIAL

EASY CARE

SOFT AND ITCH FREE

150 GSM LIGHT WEIGHT YARN

D7S13S277

MERINO BASE LAYER
MERINO
100% MERINO WOOL
Dunning label on front left hem
S-2X
DGW0544



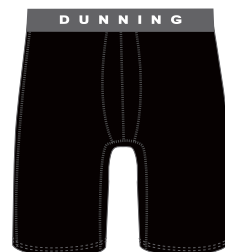
D7S13S288

MERINO BASE LAYER
MERINO
100% MERINO WOOL
Dunning label on front left hem
S-2X
DGW0594



D7S13S239

MERINO BASE LAYER
MERINO
100% MERINO WOOL
Waistband logo
S-2X
DGW0543



BLK BLACK

S M L XL 2X
SIZE CHART 28-30 32-34 36-38 40-42 44-46

FOUR-WAY STRETCH PERFORMANCE BOTTOMS

OFFERING EXTRAORDINARY PLAYABILITY, THE DUNNING PANTS AND SHORTS HAVE REPEATEDLY BEEN IDENTIFIED AS THE BEST TECHNICAL BOTTOMS IN GOLF.



5-POCKET BOTTOMS

The 5-Pocket Pant and Short features a snap button and offers a two-piece waistband construction that has an athletic fit. The 3-needle top stitch and coin pocket system offers a modern styling. Available in four colors, this four-way stretch pant emphasizes on playability, fit and freedom of movement.

3-NEEDLE TOP STITCH, SNAP BUTTON AND COIN POCKET FOR A MODERN STYLE

FOUR-WAY STRETCH FOR COMPLETE FREEDOM OF MOVEMENT

TWO-PIECE WAISTBAND CONSTRUCTION



PLAYERS FIT BOTTOMS

The Players Fit Short and Pant combine classic touches like single-needle tailoring with modern features like four-way stretch for complete freedom of movement. These ultra-lightweight bottoms are very flattering and fit all body types.

V-NOTCH IN THE BACK WAISTBAND

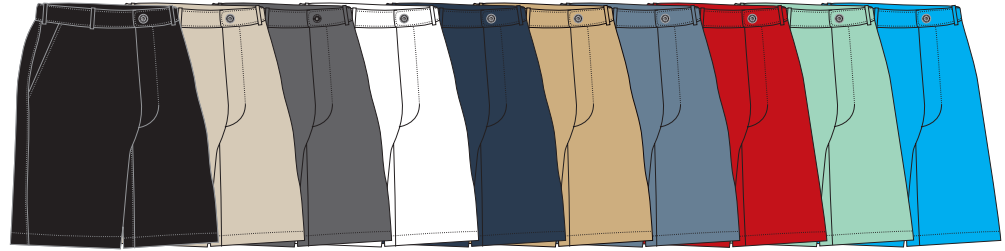
TWO-PIECE WAISTBAND CONSTRUCTION

FOUR-WAY STRETCH FOR COMPLETE FREEDOM OF MOVEMENT

D7S13H055

PLAYERS FIT WOVEN SHORT

4-WAY STRETCH
 88% POLYESTER / 12% SPANDEX
 Dunning label on back right pocket
 30-42, 33, 35
 DGW0593



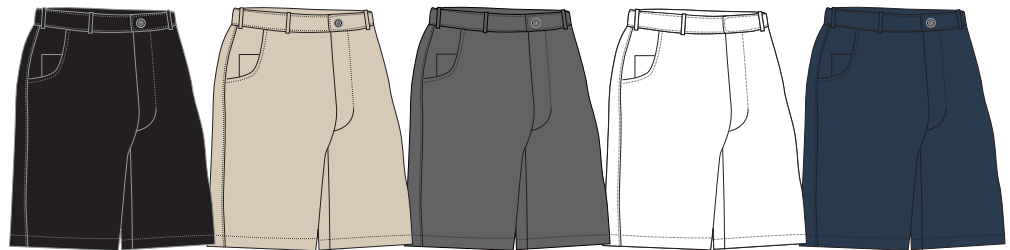
BLK	BLACK
TAN	TAN
CHRC	CHARCOAL
WHT	WHITE
HALO	HALO
DKBG	DARK BEIGE

MIDS	MID DUSK
RED	RED
BEGL	BEACH GLASS
ABAY	A-BAY

D7F14H600

5-POCKET SHORT

4-WAY STRETCH
 88% POLYESTER / 12% SPANDEX
 Dunning label on back right pocket
 30-42, 33, 35
 DGW0593

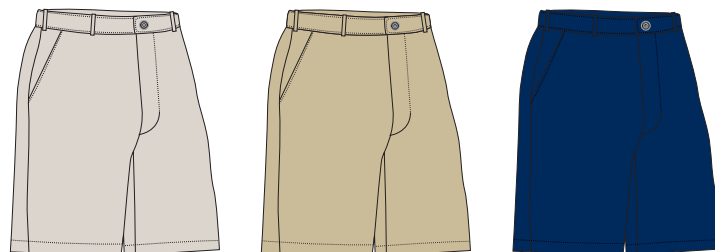


BLK	BLACK
TAN	TAN
CHRC	CHARCOAL
WHT	WHITE
HALO	HALO

D7S14H350

HERITAGE PERFORMANCE SHORT

STRETCH COTTON
 70% COTTON /
 25% POLYESTER SORBTEK /
 5% SPANDEX TWILL
 Dunning label on back right pocket
 30-42, 33, 35
 DGW0593



OYS	OYSTER
KHK	KHAKI
WNDS	WINDSOR BLUE

D7S13P067

PLAYERS FIT WOVEN PANT

4-WAY STRETCH
 88% POLYESTER / 12% SPANDEX
 Dunning label on back right pocket
 30-40, 30," 32" or unfinished hem
 DGW0594

BLK	BLACK
TAN	TAN
CHRC	CHARCOAL
HALO	HALO
DKBG	DARK BEIGE



D7F14P600

5-POCKET PANT

4-WAY STRETCH
 88% POLYESTER / 12% SPANDEX
 Dunning label on back right pocket
 30-40, 30," 32" or unfinished hem
 DGW0594

BLK	BLACK
TAN	TAN
CHRC	CHARCOAL
HALO	HALO

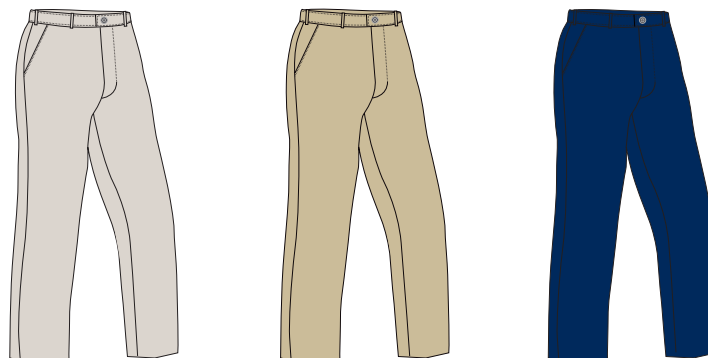


D7S14P350

HERITAGE PERFORMANCE CHINO

STRETCH COTTON
 70% COTTON /
 25% POLYESTER SORBTEK /
 5% SPANDEX TWILL
 Dunning label on back right pocket
 30-40, 30," 32" or unfinished hem
 DGW0594

OYS	OYSTER
KHK	KHAKI
WNDS	WINDSOR BLUE





SALES

S. MIKE ELLIOTT, EVP OF SALES / 910.315.4963
BOB MULCAHY, VP OF SALES / 646.840.5249

CONTACT

WWW.DUNNINGGOLF.COM / CUSTOMERSERVICE@DUNNINGGOLF.COM
888.247.5187 / 134 WEST 37TH STREET 4TH FLOOR NEW YORK NY 10018

©2015 DUNNING GOLF. ALL RIGHTS RESERVED. TERMS AND CONDITIONS CAN BE FOUND AT WWW.DUNNINGGOLF.COM