

DUNNING

ENGINEERED FOR ATHLETES | DESIGNED FOR PLAYERS™

SPRING 2026



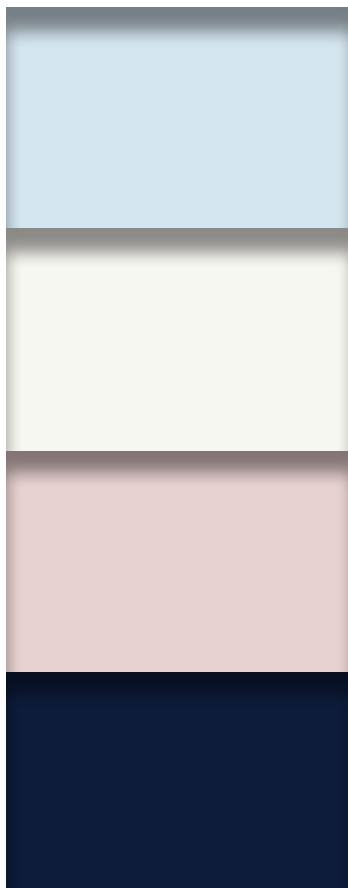




D U N N I N G WOMENS

ENGINEERED: Starting with the fibers, our Women's collection is crafted with a priority on performance capabilities. Whether we are using innovative technology like COOLMAX® fibers or one of our proprietary fabrics, we deliver a range of benefits across the product line that elevate comfort and playability in a variety of conditions.

DESIGNED: Trend-right silhouettes, seasonal colors, and an array of slimming and contouring details add sophistication to every piece without sacrificing performance.



SALING
SALB

WHITE
WHT

DUSK
PINK
DUPK

HALO
HALO

D2S26K208

**MEREDITH JERSEY
PERFORMANCE
SLEEVELESS POLO**

55% Nylon
28% Polyester
17% Spandex

Athletic fit, Bonded collar & hem, Platinum
satin piping details, Beveled edge buttons,
Laser-cut placket, Mesh insert along center
back, Tonal raised heatseal Dunning logo
at lower left hem

XS-XXL | DGW5944

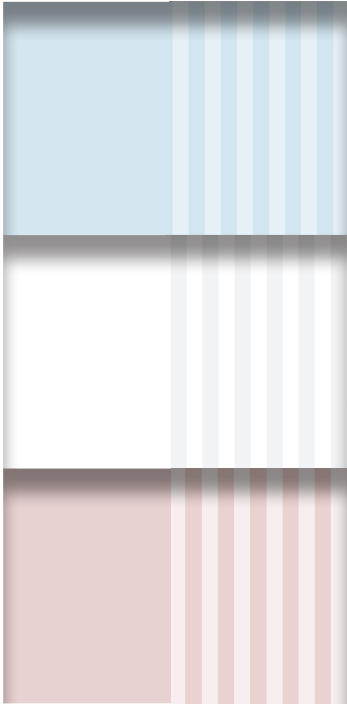


4-WAY
STRETCH



MOISTURE
WICKING





SALING
SALB

WHITE
WHT

DUSK
PINK
DUPK

D2S26K209

LYDIA PERFORMANCE SLEEVELESS POLO

40% Coolmax®

60% Polyester

Athletic fit, Plated rib polo, Flat knit collar,
Platinum taping detail, Enamel zipper with
delta teeth, Mesh insert back yoke, Tonal raised
heatseal Dunning logo at lower left hem

XS - XXL | DGW5944

COOLMAX®

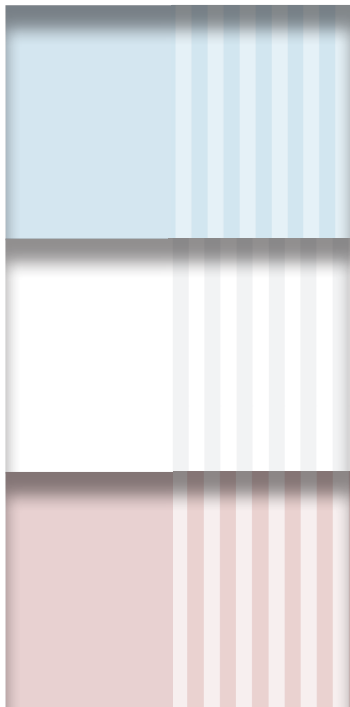


4-WAY
STRETCH



UPF 50+





SALING
SALB

WHITE
WHT

DUSK
PINK
DUPK

D2S26K416

LYDIA PERFORMANCE SHORT-SLEEVE POLO

40% Coolmax®

60% Polyester

Athletic fit, Plated rib polo with sculpted jersey collar, placket and sleeves with engineered mesh piecing details, Platinum satin piping details, Enamel reverse coil zipper, Engineered mesh inset at shoulders, Tonal raised heatseal Dunning logo at lower left hem

XS - XXL | DGW5994

COOLMAX®



4-WAY
STRETCH



UPF 50+





SALING
SALB

WHITE
WHT

DUSK
PINK
DUPK

HALO
HALO

D2S26K415

**MEREDITH JERSEY
PERFORMANCE
SHORT-SLEEVE POLO**

55% Nylon
28% Polyester
17% Spandex

Athletic fit, Bonded collar, sleeve, cuff
and hem, Platinum satin piping details,
Beveled edge buttons, Laser-cut placket,
Mesh insert along center back and side
panels, Tonal raised heatseal Dunning
logo at lower left hem

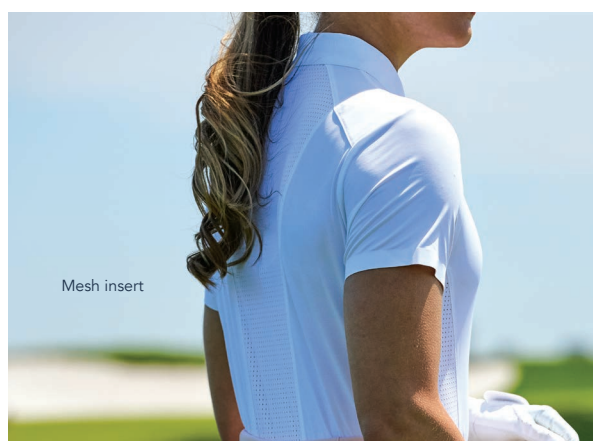
XS-XXL | DGW5994



4-WAY
STRETCH

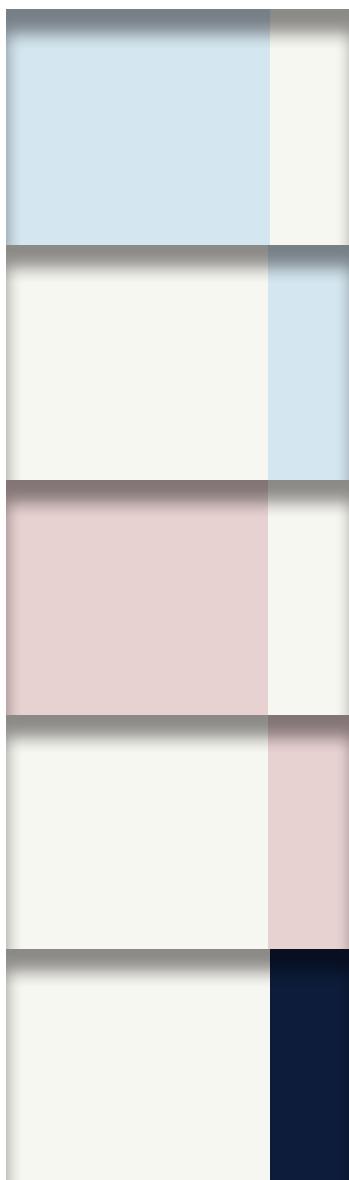


MOISTURE
WICKING



Mesh insert





SAILING BLUE /
WHITE
SABW

WHITE /
SAILING
BLUE
WSBL

DUSK PINK/
WHITE
DKWH

WHITE /
DUSK PINK
WDUP

WHITE / HALO
WTHA

D2S26K437

EMMWICK VENTILATED PERFORMANCE LONG-SLEEVE POLO

47% Coolmax®

53% Polyester

Athletic Fit, Bonded contrast self collar,
Platinum satin piping details, Beveled edge
buttons, Laser-cut placket, Tonal raised
heatseal Dunning logo at center back neck

XS - XXL | DGW5945

COOLMAX



4-WAY
STRETCH



UPF 50+





BLACK
BLK

GLORY
GLRY

WHITE
WHT

HALO
HALO

D2S26K170

**PLAYER 2.0 JERSEY
PERFORMANCE
SHORT-SLEEVE POLO**

45% Coolmax®

43% Polyester

12% Spandex

Athletic fit, Self collar, Platinun satin piping
details, Beveled edge buttons, Dunning logo
at lower left hem

XS - XXL | DGW5944

COOLMAX



4-WAY
STRETCH

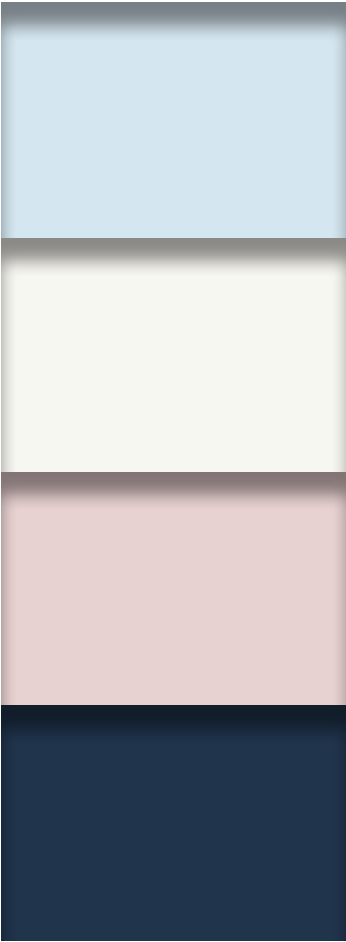


MOISTURE
WICKING



UPF
50+





SALING
BLUE
SALB

WHITE
WHT

DUSK
PINK
DUPK

HALO
HALO

D2S26K608
**TINA PERFORMANCE
INTERLOCK
LONG-SLEEVE
LAYERING**

83% Polyester
17% Spandex

Athletic fit, Platinum satin pipping details,
Enamel zipper pull with delta teeth, Plated
rib ergonomic-shaped panel, Tonal raised
heatseal Dunning logo at back neck

XS - XXL | DGW5946



4-WAY
STRETCH

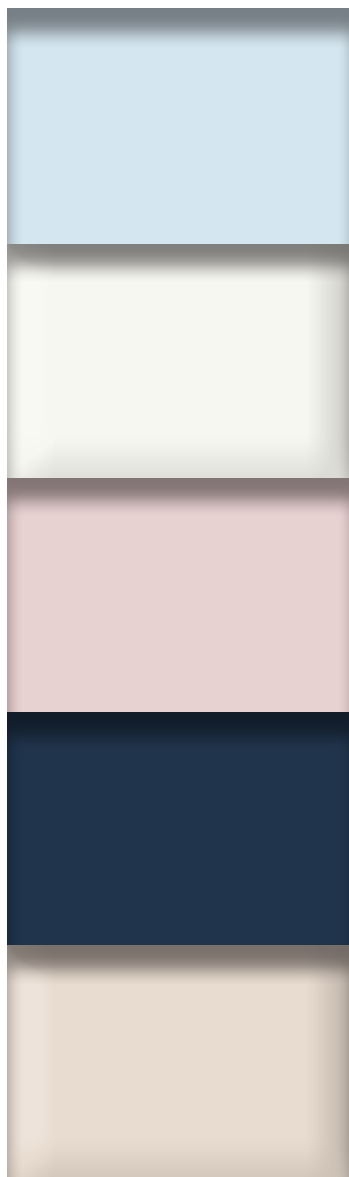


MOISTURE
WICKING



UPF 50+
UPF 50+





SALING
SALB

WHITE
WHT

**DUSK
PINK**
DUPK

HALO
HALO

SANDSTONE
SNT

D2S26K607
**SYDNEY
PERFORMANCE
INTERLOCK
LONG-SLEEVE
HOODIE**

75% Nylon
25% Spandex

Comfort fit, Water-resistant fabric,
Platinum satin piping details, Front
kangaroo pocket with tonal raised
heatseal Dunning logo on left side

XS - XXL | DGW5946

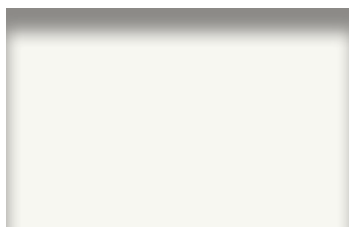


4-WAY
STRETCH



UPF 50+





WHITE
WHT

D2S25V661

**LILLIE
PERFORMANCE VEST**

88% Nylon
12% Spandex

Athletic fit, Textured ciré with performance interlock panels, Platinum satin piping details, Diamond cut teeth zipper with rectangle zipper pull, Right front chest pocket with diamond cut teeth, 2 side pockets with invisible zipper, Tonal raised heatseal Dunning logo at back neck

XS - XXL | DGW5999



4-WAY
STRETCH

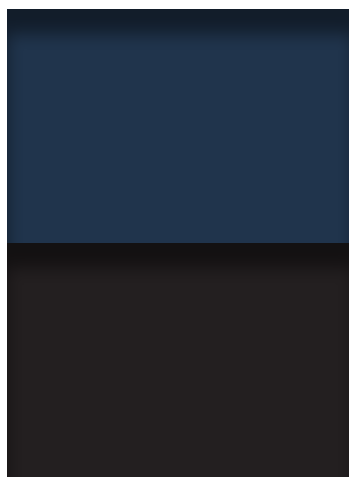


WATER
RESISTANT



UPF
50+





HALO
HALO

BLACK
BLK

D2S25J660

**ZOE
PERFORMANCE
JACKET**

88% Nylon

12% Spandex

Athletic fit, Textured ciré with performance interlock panels, Hanging ventilated back yoke, Platinum satin piping details, Diamond cut teeth zipper with rectangle zipper pull, Right front chest pocket with diamond cut teeth, 2 side pockets with invisible zipper, Tonal raised heatseal Dunning logo at back neck

XS - XXL | DGW59411



4-WAY
STRETCH



WATER
RESISTANT



UPF 50+



16-INCH MARIA PERFORMANCE JERSEY LASER-CUT SKORT

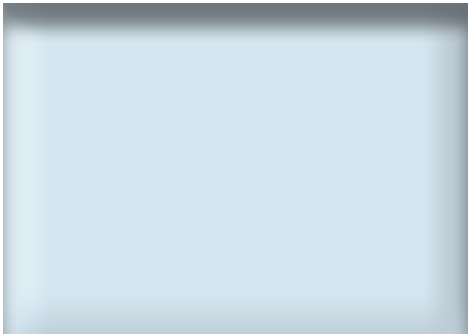


D2S26R808
**16-INCH MARIA
PERFORMANCE JERSEY
LASER-CUT SKORT**
55% Nylon
28% Polyester
17% Spandex
16-inch length, Invisible zip-front pockets, Mesh
flounce details on side seams, Compression short
liner with ball pocket, Tonal raised Dunning heatseal
above back right pocket
XS - XXL | DGW5945

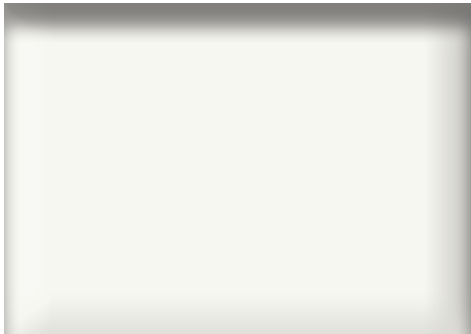
4-WAY
STRETCH

MOISTURE
WICKING

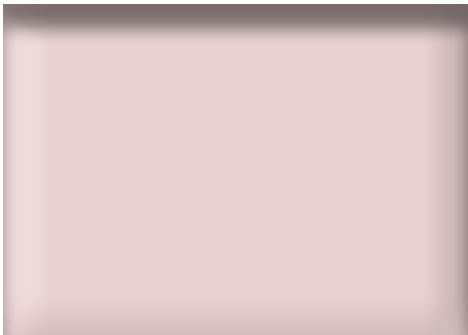
UPF
50+



SALING BLUE
SALB



HALO
HALO



DUSK PINK
DUPK

16-INCH PLAYER FIT STRETCH PERFORMANCE PLEATED SKORT



D ESSENTIALS

D2F24R443

16-INCH PLAYER FIT STRETCH PERFORMANCE PLEATED SKORT

88% Polyester
12% Spandex

16-inch length, Pleated framed side panel, Invisible zip center back closure, Front slash pockets, Mesh short liner with ball pockets, Tonal raised heatseal Dunning heat seal above back right pocket

XS - XXL | DGW5994

PLAYER



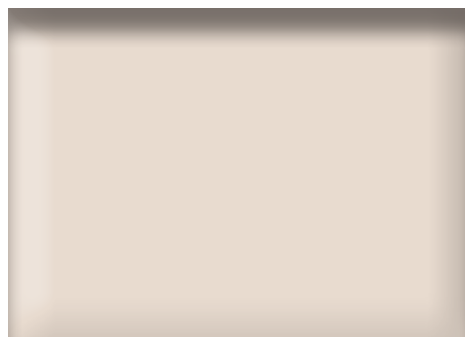
4-WAY
STRETCH



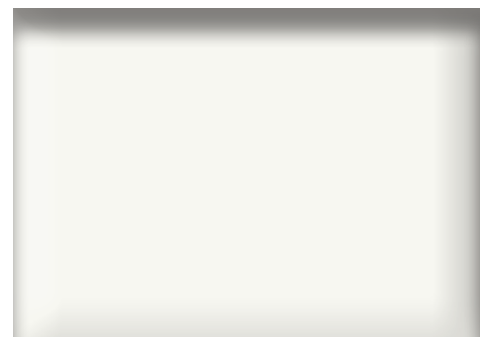
MOISTURE
WICKING



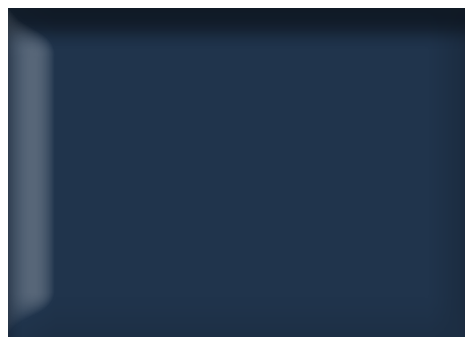
UPF 50+



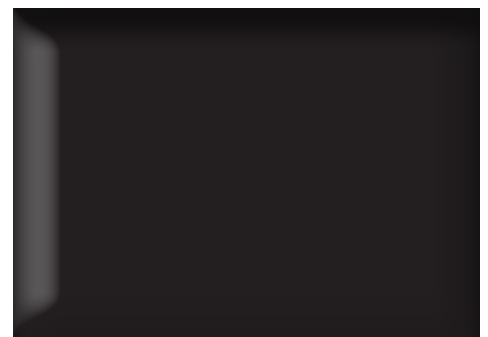
SANDSTONE
SNT



WHITE
WHT



HALO
HALO



BLACK
BLK

PLAYER STRETCH PERFORMANCE PANT

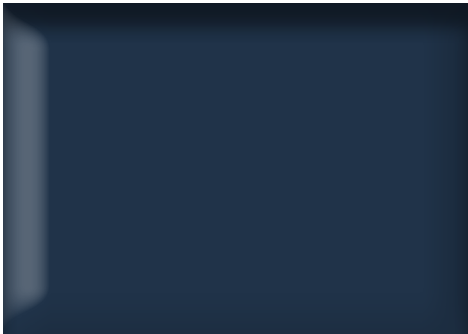


D ESSENTIALS

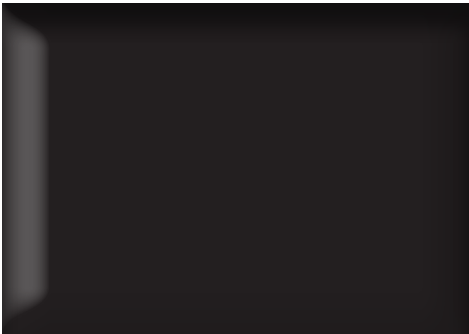
D2S26P295
**PLAYER
STRETCH
PERFORMANCE
PANT**

88% Polyester
12% Spandex
27-Inch cropped length, Regular fit, Two zip-front
pockets, Back western pockets, Tonal raised
Dunning heatseal above back right pocket
XS - XXL | DGW5995

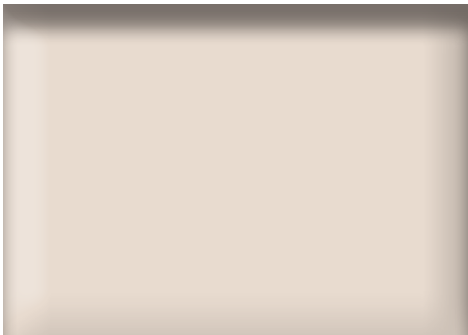
PLAYER



HALO
HALO



BLACK
BLK



SANDSTONE
SNT

PLAYER FIT STRETCH PERFORMANCE PANT



D | ESSENTIALS

D2S24P293

PLAYER FIT STRETCH PERFORMANCE PANT

88% Polyester

12% Spandex

29.5-inch length, Continental front pockets, Invisible zipper on left side, Ankle-length with tapered leg, Black western pockets, Tonal raised Dunning heatseal above back right pocket

XS - XXL | DGW5945

PLAYER



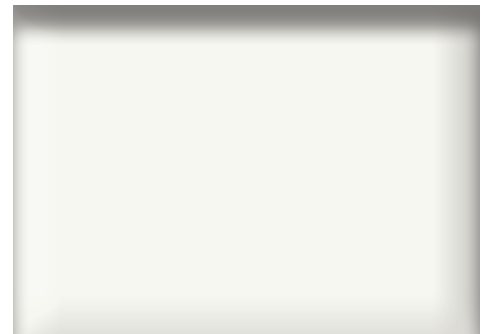
4-WAY
STRETCH



MOISTURE
WICKING



UPF 50+



WHITE
WHT