



D U N N I N G

ENGINEERED FOR ATHLETES | DESIGNED FOR PLAYERS™

S P R I N G 2 0 2 6





DUNNING

DIFFERENCE

Where technical performance meets
sophisticated, versatile style.

Everything starts with the fibers. We take the
most innovative performance fabrics and tailor
them with style to create modern classics.

From start to finish we are engineered and
designed to deliver fit, playability, and true
performance without compromise.



DUNNING

TECHNOLOGIES

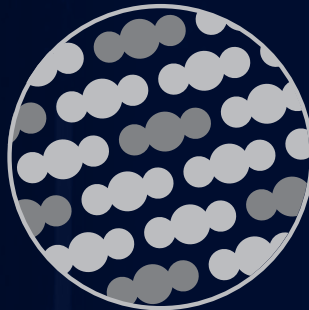
STARTING WITH THE FIBERS

We partner with leading technology companies and develop our own proprietary fabrics to deliver the epitome of innovative golf performance.

Our proprietary fabrics are engineered with a focus on technical benefits and advantages.

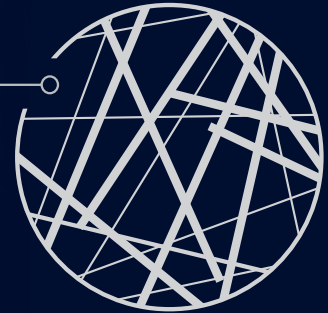
COOLMAX®

COOLMAX® fiber's permanent moisture management keeps you cooler, dryer and more comfortable.



PRIMALOFT®

PrimaLoft® offers premium insulation for water repellency and superior thermal performance.



Thermolite®

THERMOLITE® fabric offers lightweight warmth from recycled resources for eco-friendly comfort and performance.



UPF 50+



Moisture Wicking



Water Resistant



Quick Dry



4-Way Stretch



Lightweight



Ventilated



Thermoregulating



Recycled



Easy Care



Athletic Fit



Anti Microbial



Wind Resistant



Breathable



Soft



DUNNING BOTTOMS

ENGINEERED: Dunning's assortment of bottoms continue to be regarded among the best in the game thanks to a combination of fit and technical performance features like 4-way stretch and moisture management.

DESIGNED: From 5-Pocket to classic trouser, a range of styles, fabrics and lengths provide versatile options but with notable consistency of fit around the waist, seat and thigh.

D7S26K166
**MORWICK VENTILATED
PERFORMANCE POLO**
in Halo

D7S26H531
**9-INCH DELANCEY
PERFORMANCE
HEATHERED SHORT**
in Marina Blue

Signature v-notch
waistband for
improved fit at
address

Moisture wicking

Spandex
yarns for
4-way
stretch

Lightweight
proprietary
fabrics

OUR SHORT GAME



Best-in-class technical shorts now in three lengths

9-INCH PLAYER FIT PERFORMANCE SHORT

**D** ESSENTIALS

D7S23H059

**9-INCH PLAYER FIT
PERFORMANCE SHORT**88% Polyester
12% Spandex

9-inch inseam, Signature V waistband, Reinforced stretch pocketing, Reinforced rear pockets, Front right tee pocket, Dunning logo folded tab on back right pocket

30-44, 33, 35 DGW59944-WAY
STRETCHMOISTURE
WICKING

UPF 50+

AVAILABLE IN 30-42,33,35****WHITE
WHT**MICROCHIP**
MCHP**BLACK**
BLK**CASHMERE BLUE***
CABL**VINTAGE INDIGO***
VTIG**TAN**
TAN**PALE YELLOW***
PAYE**ANCHOR**
ANCR**STONE**
STON**HALO**
HALO**FOREST GREEN***
FSTG**DARK KHAKE***
DAKH

10-INCH PLAYER FIT PERFORMANCE SHORT

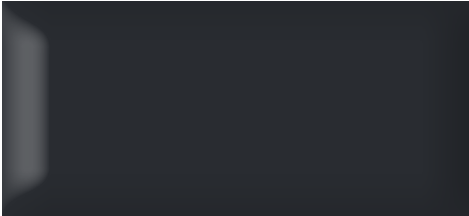


D ESSENTIALS

D7S13H055
**10-INCH PLAYER FIT
PERFORMANCE SHORT**
88% Polyester
12% Spandex
10-inch inseam, Signature V waistband,
Reinforced stretch pocketing, Reinforced rear
pockets, Front right tee pocket, Dunning logo
tab on back right pocket
30-44, 33, 35 | DGW5994



ANCHOR
ANCR



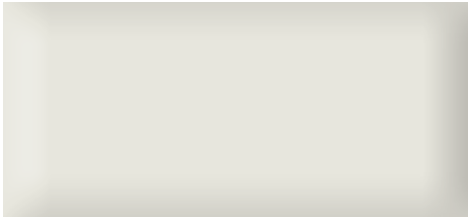
BLACK
BLK



HALO
HALO



MICROCHIP
MCHP



STONE
STON



TAN
TAN

8-INCH PLAYER FIT PERFORMANCE SHORT



D ESSENTIALS

D7S24H058

8-INCH PLAYER FIT PERFORMANCE SHORT

88% Polyester

12% Spandex

8-inch inseam, Signature V waistband,
Reinforced stretch pocketing, Reinforced
rear pockets, Front right tee pocket, Dunning
logo folded tab on back right pocket

30-42, 33, 35 | DGW5994



4-WAY
STRETCH



MOISTURE
WICKING



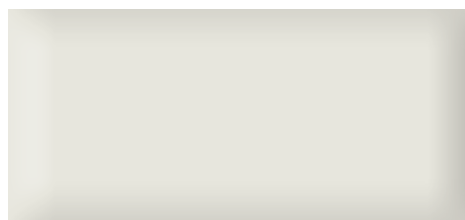
UPF 50+



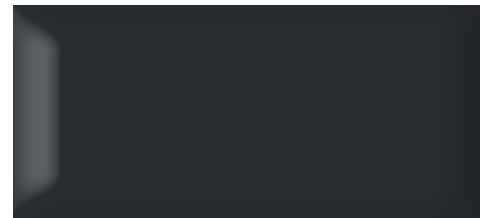
ANCHOR
ANCR



HALO
HALO



STONE
STON



BLACK
BLK



MICROCHIP
MCHP



TAN
TAN

9-INCH DELANCEY PERFORMANCE HEATHERED SHORT

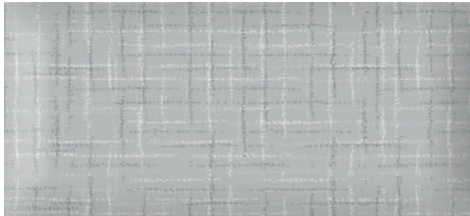


D7S26H531
**9-INCH DELANCEY
PERFORMANCE
HEATHERED SHORT**

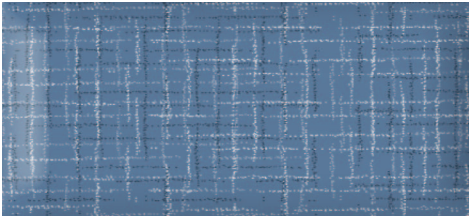
50% Polyester
50% Elastereil-P
9-inch inseam, Tonal crosshatch pattern,
Signature V notch waistband, Reinforced
stretch pocketing, Reinforced rear pockets,
Front right tee pocket, Dunning heat seal
logo above back right pocket
30-42, 33, 35 | DGW5994

COOLMAX

- 4-WAY
STRETCH
- MOISTURE
WICKING
- BREATHABLE
- LIGHT
WEIGHT
- UPF 50+



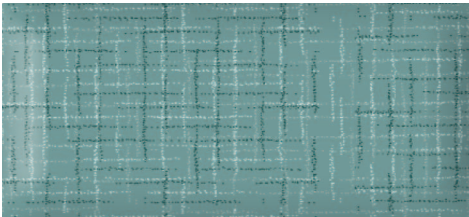
ALLOY GREY
ALGY



MARINA BLUE
MRNB



SUNSET
SUS



SLATE GREEN
SLGN



HUMUS
HUMS



MODERN PLAYER FIT PERFORMANCE PANT



D ESSENTIALS

D7S25P516
**MODERN PLAYER FIT
PERFORMANCE PANT**

88% Polyester
12% Spandex

Flat front with modern fit, Signature V waistband, Reinforced stretch pocketing, Reinforced rear pockets, Right front tee pocket, 14.5-inch leg opening, Dunning logo tab on back right pocket

30-42, 33, 35 (00, 30, 32)

DGW5995 *30-40, 33, 35 (30, 32)



4-WAY
STRETCH



MOISTURE
WICKING



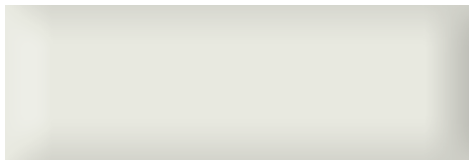
UPF 50+
UPF 50+



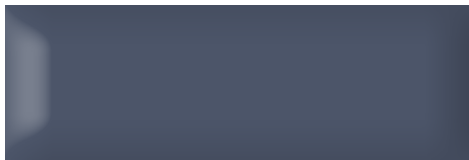
ANCHOR
ANCR



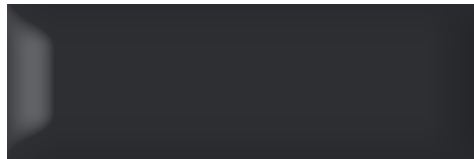
HALO
HALO



STONE
STON



VINTAGE INDIGO*
VTIG



BLACK
BLK



MICROCHIP
MCHP



TAN
TAN



DARK KHAKI*
DAKH

PLAYER FIT 5-POCKET PERFORMANCE PANT



D ESSENTIALS

D7S21P068

PLAYER FIT 5-POCKET PERFORMANCE PANT

88% Polyester

12% Spandex

Reinforced stretch pocketing, Reinforced rear pockets, Front right tee pocket, 15-1/2-inch leg opening, Dunning logo tab on back right pocket

30-42, 33, 35 (00, 30, 32)**DGW5995 *30-40, 33, 35 (30, 32)**4-WAY
STRETCHMOISTURE
WICKING

UPF 50+



DARK KHAKI*
DAKH



BLACK
BLK



VINTAGE INDIGO*
VTIG



TAN
TAN



MICROCHIP
MCHP



ANCHOR
ANCR



WHITE*
WHT



CASHMERE BLUE*
CABL



HALO
HALO



STONE
STON

PLAYER FIT PERFORMANCE PANT



D | ESSENTIALS

D7S13P067
**PLAYER FIT
PERFORMANCE PANT**
88% Polyester
12% Spandex
Signature V waistband, Reinforced stretch
pocketing, Reinforced rear pockets, Front right
tee pocket, 16-1/2-inch leg opening, Dunning
logo tab on back right pocket
30-42, 33, 35 (00,30, 32) DGW5995

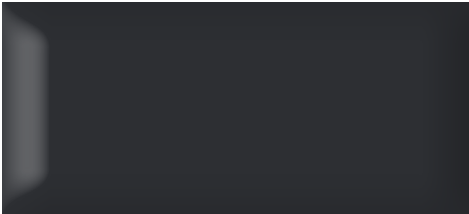

4-WAY
STRETCH


MOISTURE
WICKING


UPF 50+



ANCHOR
ANCR



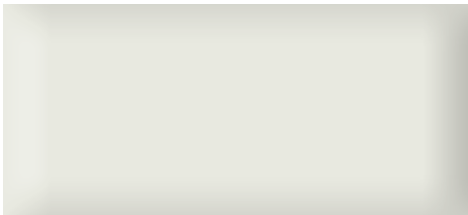
BLACK
BLK



HALO
HALO



MICROCHIP
MCHP



STONE
STON



TAN
TAN

GLENDALE SATEEN PERFORMANCE PANT



D7F23P748

GLENDALE SATEEN PERFORMANCE PANT

98% Cotton

2% Spandex

Mid-rise, Relaxed straight fit from hip
through thigh tapered at leg, 14.5-inch leg
opening, Soft garment washed sateen, Faux
suede logo patch on waistband at back right
30-40, 33, 35 (30, 32)
DGW5996



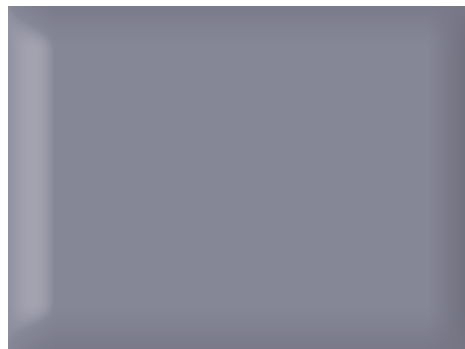
2-WAY
STRETCH



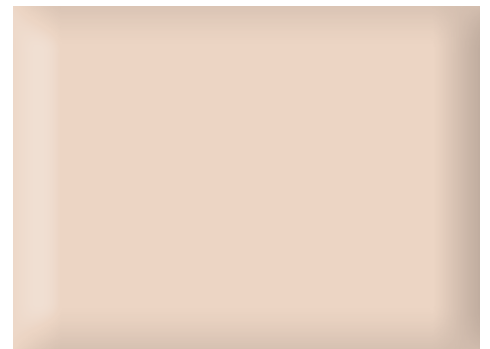
SOFT



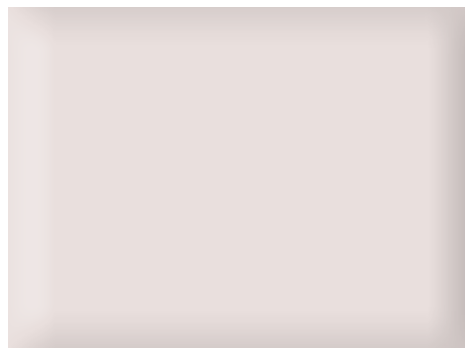
UPF 50+
UPF 50+



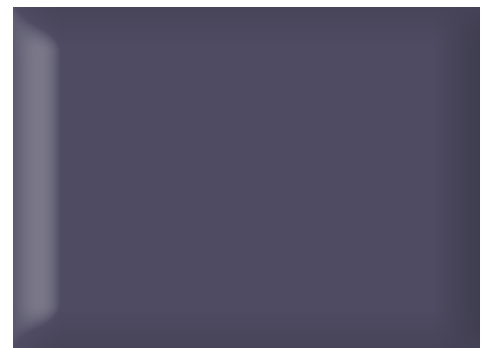
SLATE BLUE
SLBE



PARCHMENT
PRCT



GRAY CLOUD
GYCL



INDIGO
INDG

D U N N I N G SHIRTS

ENGINEERED: All of Dunning's polo shirts feature the moisture-wicking and breathable benefits of COOLMAX® fiber. Our Ventilated options provide optimal breathability and coolness from thousands of perforated holes.

DESIGNED: Sophisticated stripes, prints and solids are brought to life in the most seasonally-relevant colors and with a mix of elevated design details.

Recycled
polyester
buttons

D7S26K168
**SHERWICK VENTILATED
PERFORMANCE POLO**
in Cashmere Blue

D7S21P068
**PLAYER FIT 5-POCKET
PERFORMANCE PANT**
in Microchip



COOLMAX®

COOLMAX® high-performance fibers keep you cool and dry

UPF 50+ Sun protection

Modern classic fit for all body types

D7S26K165

**RIPLEY JERSEY
PERFORMANCE
POLO**

48% Coolmax®

47% Polyester

5% Lycra

Cutaway collar, Diamond Dot
print, Contrast neck seam piping,
Recycled poly buttons, Dunning
heatseal logo on right sleeve

S-XXL | DGW5925

COOLMAX®



4-WAY
STRETCH



MOISTURE
WICKING



UPF 50+



BREATHABLE



**TILE BLUE
TIBL**

**CASHMERE
BLUE
CABL**

**SUNSET
SUS**



D7S26K166

**MORWICK
VENTILATED
PERFORMANCE
POLO**

43% Coolmax®

45% Polyester

12% Spandex

Spread collar, Vine Leaf print,
Self inner collar neck band and
inner placket, Contrast neck
seam piping, Recycled poly
buttons, Dunning heatseal logo
on right sleeve

S-XXL | DGW5925

COOLMAX®



4-WAY
STRETCH



MOISTURE
WICKING



UPF 50+



VENTILATED



**SLATE
GREEN
SLGN**

**HALO
HALO**

**SUNSET
SUS**



D7S26K167
**LANWICK
 VENTILATED
 PERFORMANCE
 POLO**

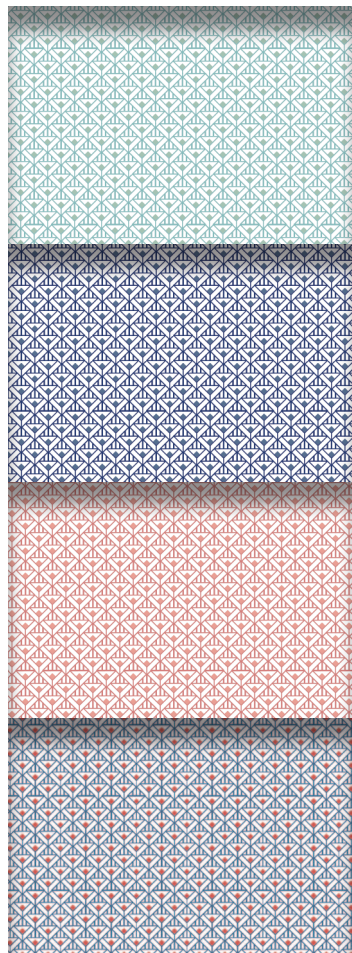
43% Coolmax®
 45% Polyester
 12% Spandex

Spread collar, Abstract geometric print, Self inner collar neck band and inner placket, Contrast neck seam piping, Recycled poly buttons, Dunning heatseal logo on right sleeve

S-XXL (XXXL*)

DGW5925

COOLMAX®



**TITLE BLUE
 TLBL**

**HALO
 HALO**

**SUNSET
 SUS**

**HALO /
 GLORY*
 HLG***



D7S26K168
**SHERWICK
 VENTILATED
 PERFORMANCE
 POLO**

43% Coolmax®
 45% Polyester
 12% Spandex

Classic collar, Palm Leaf print, Self inner collar neck band and inner placket, Contrast neck seam piping, Recycled poly buttons, Dunning heatseal logo on right sleeve

S-XXXL | DGW5925

COOLMAX®



**TILE BLUE
 TIBL**

**CASHMERE
 BLUE
 CABL**

**LIGHT
 SUNSET
 LGST**

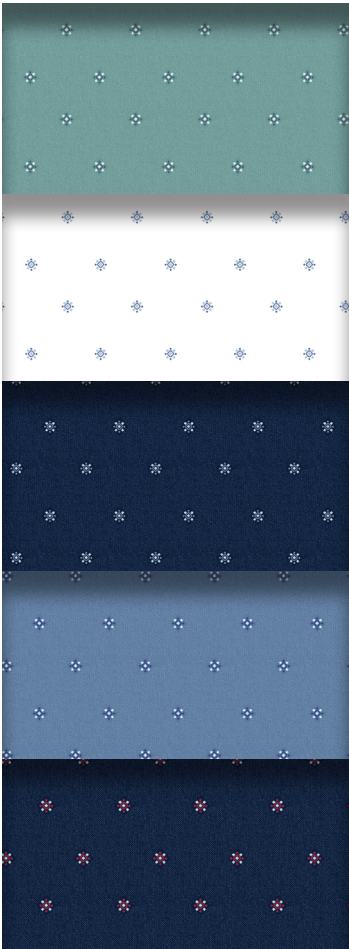


D7S26K164
**KINGSLEY
VENTILATED
PERFORMANCE
POLO**

43% Coolmax®
45% Polyester
12% Spandex
Spread collar, Mini foulard print,
Self inner collar neck band and
inner placket with contrast neck
seam piping, Recycled poly
buttons, Dunning logo heatseal
on right sleeve

S-XXXL | DGW5925

COOLMAX®



SLATE
GREEN
SLGN

WHITE
WHT

HALO
HALO

MARINA
BLUE
MRNB

HALO /
GLORY
HLGY

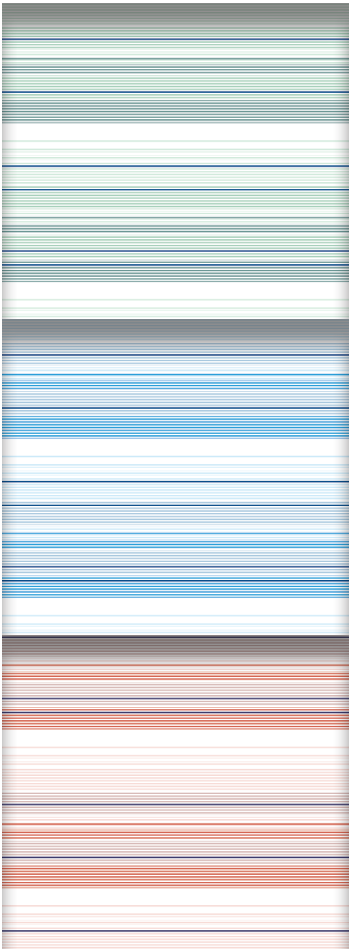


D7S26K163
**HIGHSMITH
JERSEY
PERFORMANCE
POLO**

35% Coolmax®
53% Polyester
12% Spandex
Cutaway collar, Multicolor
stripe jersey, Recycled poly
buttons, Dunning heatseal
logo on right sleeve

S-XXL | DGW5925

COOLMAX®



SLATE
GREEN
SLGN

MARINA
BLUE
MRNB

SUNSET
SUS



D7S26K171

**MILWICK
VENTILATED
PERFORMANCE
POLO**

45% Coolmax®

43% Polyester

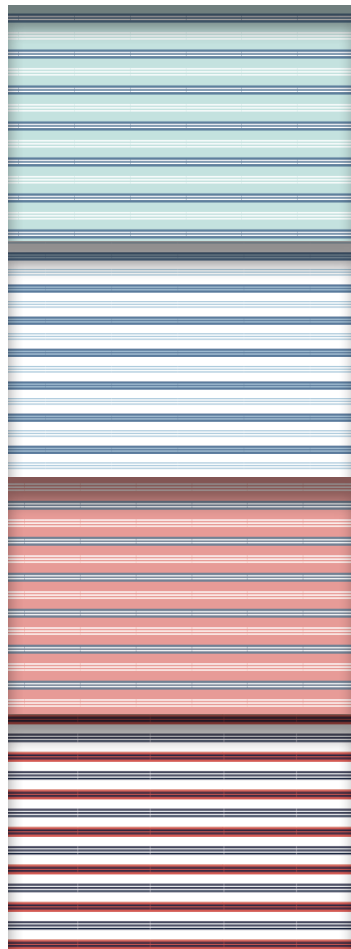
12% Spandex

Spread collar, Ventilated
mesh multistripe, Contrast
neck seam piping, Recycled
poly buttons, Dunning logo
heat seal on right sleeve

S-XXL (XXXL*)

DGW5925

COOLMAX®



**TILE BLUE /
MARINA**
TBMB

**MARINA
BLUE / WHITE**
MBWT

**SUNSET /
MARINA BLUE**
SUMB

**HALO /
GLORY***
HLGY



D | ESSENTIALS

D7S25K128

**HELSBY
PINSTRIPE
JERSEY
PERFORMANCE
POLO**

80% Coolmax®

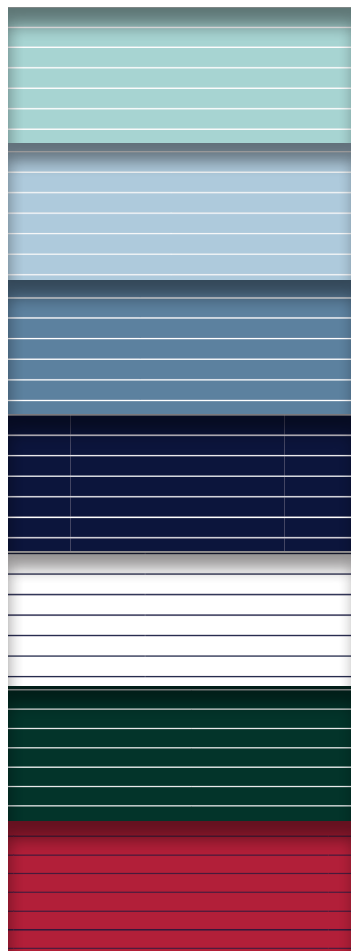
5% Polyester

15% Spandex

Spread collar, Solid inner collar
and button placket, Contrast
neck seam binding, Recycled
poly Dunning logo buttons,
Dunning heatseal logo on right
sleeve

S-XXXL | DGW5994

COOLMAX®



**TILE BLUE /
WHITE**
TLBW

**CASHMERE
BLUE / WHITE**
CSBW

**MARINA
BLUE / WHITE**
MBWH

**HALO /
WHITE**
HLWH

**WHITE /
HALO**
WTHA

**FOREST
GREEN/
WHITE**
FGNW

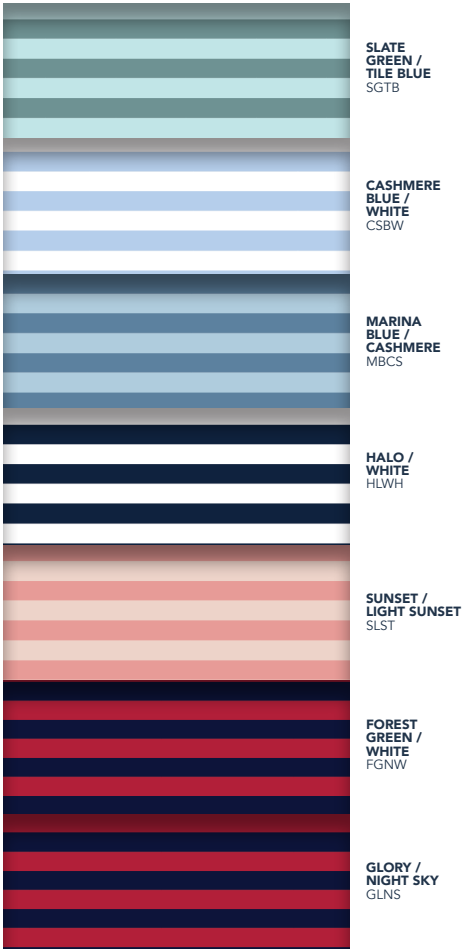
**GLORY /
NIGHT SKY**
GLNS



D ESSENTIALS

D7F24K109
**BUCKHAVEN
VENTILATED
PERFORMANCE
POLO**
37% Coolmax®
49% Polyester
14% Spandex
Classic collar with solid con-
trast inner collar and placket,
Ventilated mesh bar stripe,
Contrast neck seam binding,
Recycled poly Dunning logo
buttons, Dunning heatseal
logo label on right sleeve
S-XXXL | DGW5994

COOLMAX®



SLATE
GREEN /
TILE BLUE
SGTB

CASHMERE
BLUE /
WHITE
CSBW

MARINA
BLUE /
CASHMERE
MBCS

HALO /
WHITE
HLWH

SUNSET /
LIGHT SUNSET
SLST

FOREST
GREEN /
WHITE
FGNW

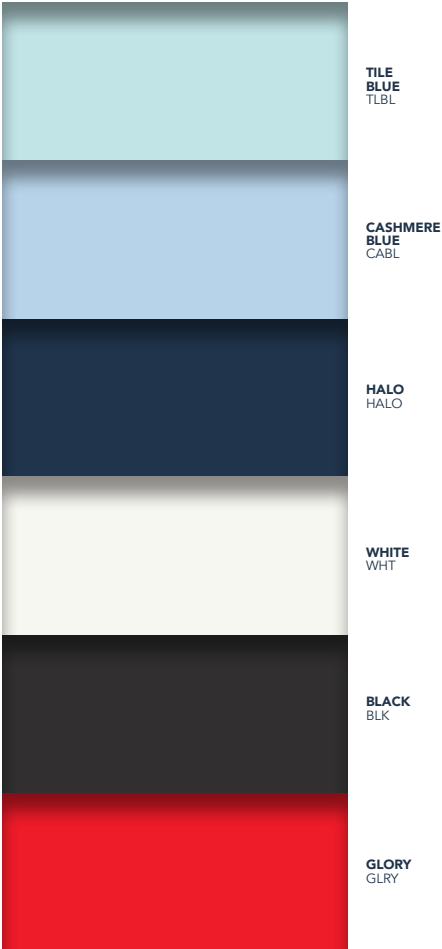
GLORY /
NIGHT SKY
GLNS



D ESSENTIALS

D7S26K170
**PLAYER 2.0
JERSEY
PERFORMANCE
POLO**
43% Coolmax®
45% Polyester
12% Spandex
Spread collar, Contrast neck
seam piping, Recycled poly
buttons, Dunning tonal logo
on half-moon back yoke
S-XXXL | DGW5944

COOLMAX®



TILE
BLUE
TLBL

CASHMERE
BLUE
CABL

HALO
HALO

WHITE
WHT

BLACK
BLK

GLORY
GLRY

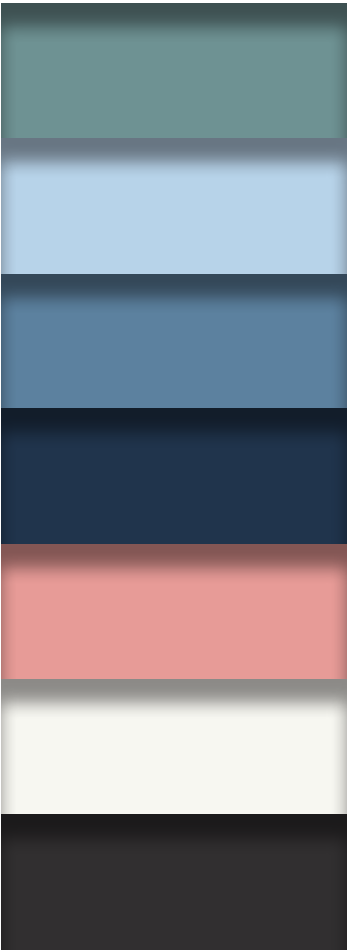




D7S26K173
**QUEST 2.0
VENTILATED
PERFORMANCE
POLO**

43% Coolmax®
45% Polyester
12% Spandex
Spread collar, Contrast neck
binding, Recycled poly Dunning
logo buttons, Dunning heatseal
logo on right sleeve
S-XXL | DGW5944

COOLMAX®



SLATE
GREEN
SLGN

CASHMERE
BLUE
CABL

MARINA
BLUE
MRNB

HALO
HALO

SUNSET
SUS

WHITE
WHT

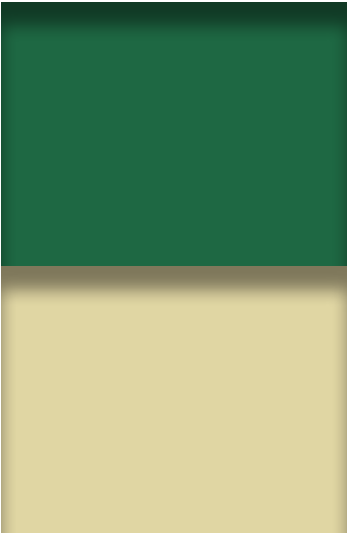
BLACK
BLK



D7S25K120
**QUEST
VENTILATED
PERFORMANCE
POLO**

43% Coolmax®
45% Polyester
12% Spandex
Self collar, Contrast neck binding,
Recycled poly Dunning logo
buttons, Dunning heatseal logo
on right sleeve
S-XXXL | DGW5944

COOLMAX®



FOREST
GREEN
FSTG

GOLDEN
HAZE
GOHZ





D7S26K175
**QUEST 2.0
 LONG-SLEEVE
 VENTILATED
 PERFORMANCE
 POLO**

43% Coolmax®
 45% Polyester
 12% Spandex
 Spread collar, Contrast neck
 seam piping, Recycled poly
 buttons, Dunning logo heatseal
 at center back neck
S-XXXL | DGW5994

COOLMAX®



4-WAY
STRETCH



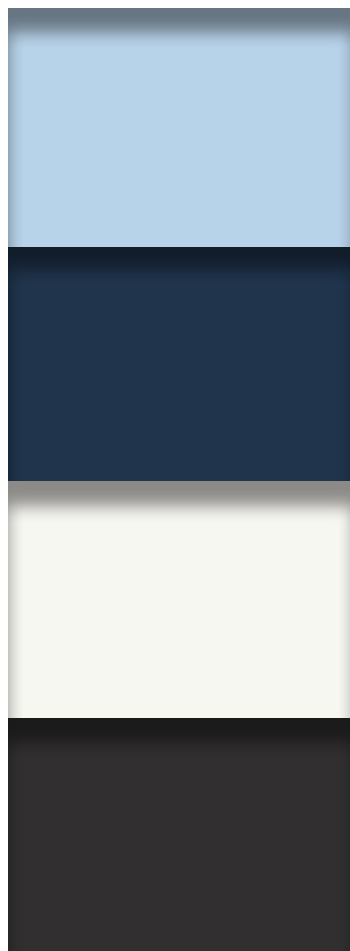
MOISTURE
WICKING



UPF 50+



VENTILATED



**CASHMERE
 BLUE
 CABL**

**HALO
 HALO**

**WHITE
 WHT**

**BLACK
 BLK**



D U N N I N G

OUTERWEAR & LAYERING

ENGINEERED: Dunning layering options feature the benefits of premium performance fabrics like COOLMAX® fibers in our Quest Collection, with the same breathable mesh technology as our Ventilated polos. Dunning outerwear options provide functional protection from wind, rain, and sun with ergonomic stretch for added comfort, and packable details for ultimate convenience.

DESIGNED: From a more technical look and feel to a more casual one, the versatility of our layering and outerwear options are unmatched for support in a variety of conditions, on and off the course. Details like unique zippers and architecturally-inspired lines level up the aesthetic appeal.

D7S26K167
**LANWICK VENTILATED
PERFORMANCE POLO**
in Halo

D7S25V900
PLAYER 2.0 VEST
in Halo

D7S25P516
**MODERN PLAYER FIT
PERFORMANCE PANT**
in Stone



D7S25K901

PLAYER 2.0 TECH
QUARTER ZIP

83% Polyester

17% Spandex

Midweight layer, Diamond-cut
locking zipper, Reflective anti-slip
performance cuff, Dunning heat-
seal logo at center back neck

S-XXXL | DGW5945

PLAYER



4-WAY
STRETCH



MOISTURE
WICKING



UPF 50+



SOFT

D7S25V900

PLAYER 2.0
TECH VEST

83% Polyester

17% Spandex

Midweight layer, Diamond-cut
locking zipper, Dunning heatseal
logo at center back neck

S-XXXL | DGW5994

PLAYER



4-WAY
STRETCH



MOISTURE
WICKING



UPF 50+



SOFT

CASHMERE
BLUE
CABL

HALO
HALO

MICROCHIP
MCHP

FOREST
GREEN
FSTG

WHITE
WHT

BLACK
BLK



D7S26K929

QUEST CONTOUR QUARTER ZIP

100% Polyester

Lightweight layer, Body-mapped mesh, Diamond cut locking zipper, Dunning heatseal logo at center back neck

S-XXL (XXXL*)

DGW5946



4-WAY
STRETCH



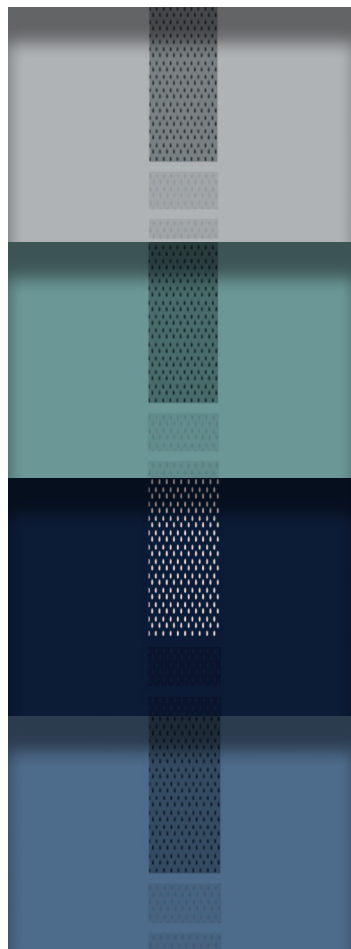
MOISTURE
WICKING



UPF 50+



VENTILATED



MICROCHIP*
MCHP

**DARK
SLATE
GREEN**
DKSG

HALO*
HALO

**DARK
MARINA**
DKMR



D7S26K920

MARCELLUS JACQUARD QUARTER ZIP

37% Nylon
46% Polyester
17% Spandex

Midweight layer, Tone on tone knit, Contrast inner neck band, Reverse coil zipper, Dunning heatseal logo at center back neck, Reflective anti-slip performance cuff

S-XXL | DGW5946



4-WAY
STRETCH



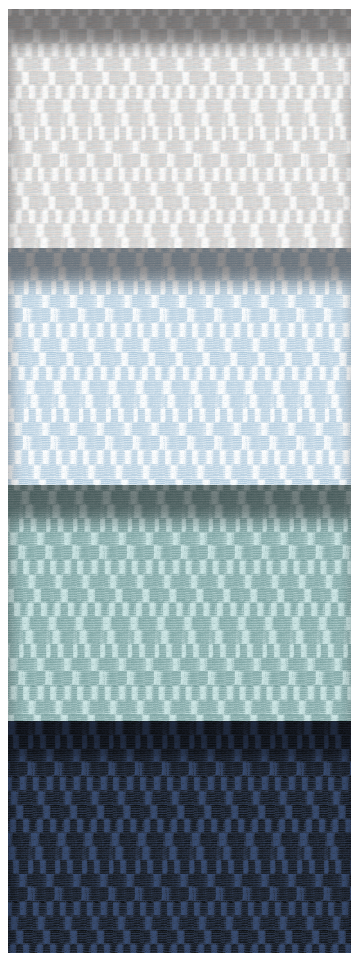
MOISTURE
WICKING



UPF 50+



SOFT



MICROCHIP
MCHP

**CASHMERE
BLUE**
CABL

**SLATE
GREEN**
SLGN

HALO
HALO





D7S26K924

**QUEST CAMO
VENTILATED
PERFORMANCE
HOODIE**

43% Coolmax®
45% Polyester
12% Spandex

Lightweight layer, Camo print,
Two-piece sleeve, banded cuffs
and hem, Dunning reflective
logo at right sleeve

S-XXL | DGW5945

COOLMAX®



4-WAY
STRETCH



MOISTURE
WICKING



VENTILATED



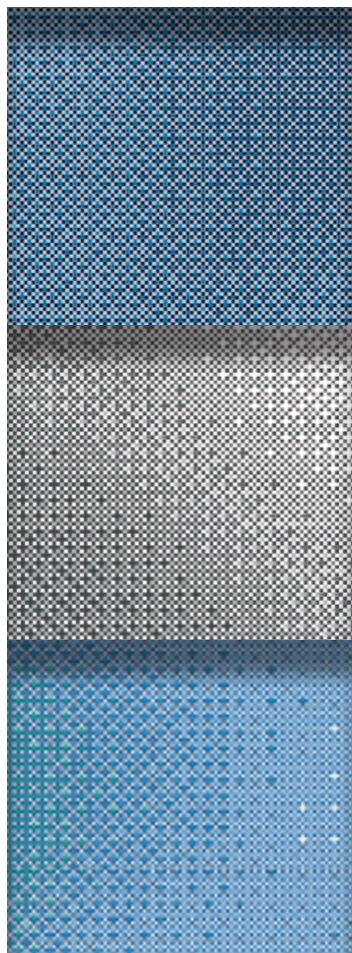
LIGHT
WEIGHT



SOFT



UPF 50+



HALO
HALO

ALLOY GREY
ALGY

TILE
BLUE
TIBL





D7S25K907

QUEST 2.0 VENTILATED PERFORMANCE HOODIE

43% Coolmax®

45% Polyester

12% Spandex

Lightweight layer, Two-piece
sleeve, Banded cuffs and
hem, Dunning reflective logo
at right sleeve

S-XXXL | DGW5994

COOLMAX®



4-WAY
STRETCH



MOISTURE
WICKING



VENTILATED



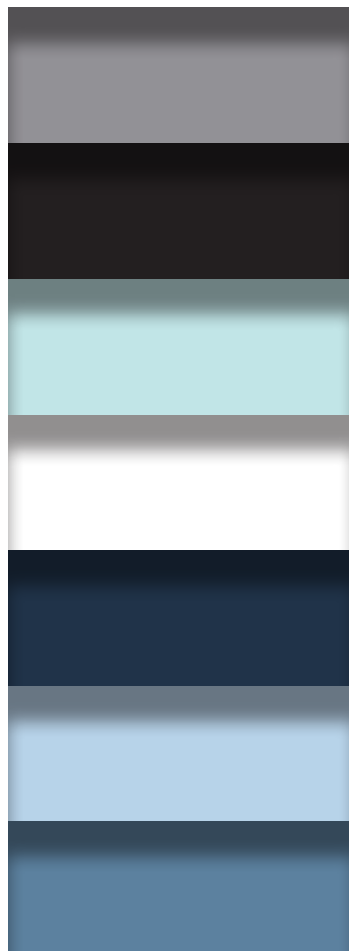
LIGHT
WEIGHT



SOFT



UPF 50+



**ALLOY
GREY**
ALGY

BLACK
BLK

**TILE
BLUE**
TIBL

WHITE
WHT

HALO
HALO

**CASHMERE
BLUE**
CABL

**MARINA
BLUE**
MRNB



D7S25K913

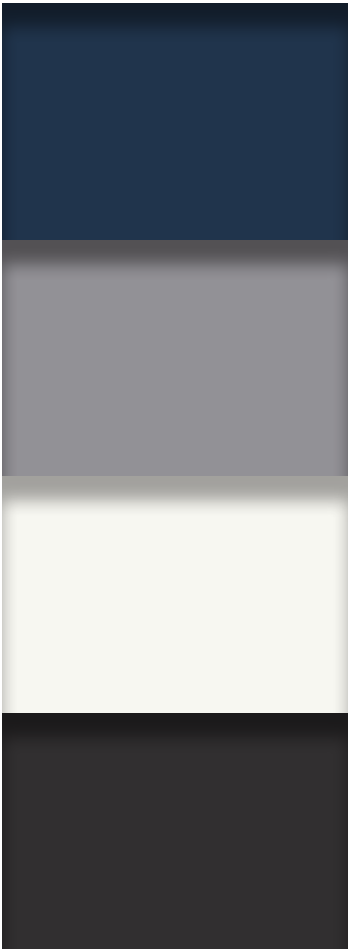
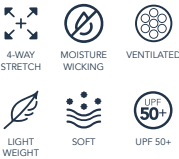
**QUEST
VENTILATED
PERFORMANCE
SHORT-SLEEVE
MOCK**

43% Coolmax®
45% Polyester
12% Spandex

Next-to-body layer, Retreated
shoulder seam, Smooth flatlock
stitching, Dunning heatseal logo at
center back neck

S-XXL | DGW5944

COOLMAX®



HALO
HALO

OWL GREY
OWGY

WHITE
WHT

BLACK
BLK



D7F23K560

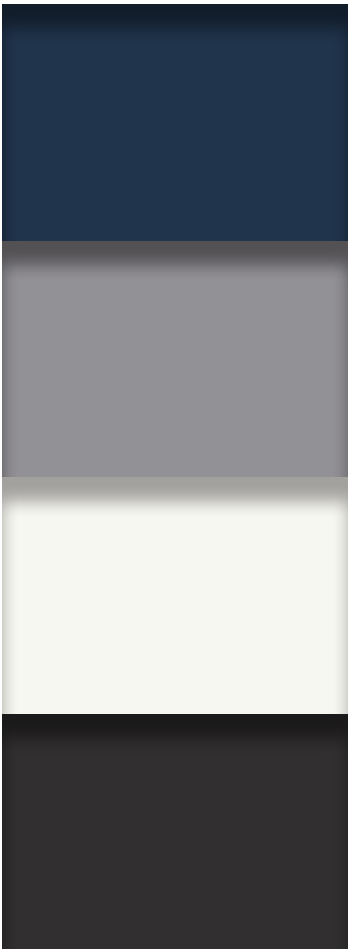
**PLAYER
LONG-SLEEVE
MOCK**

49% Coolmax®
47% Polyester
4% Spandex

Lightweight layer, Solid color
Coolmax® blend jersey, Tonal,
Raised "D" heatseal logo on
collar, Raglan sleeves, Open
Hem w/Tubular cuffs, Athletic fit

S-XXL | DGW5994

COOLMAX®



HALO
HALO

ANCHOR
ANCR

WHITE
WHT

BLACK
BLK

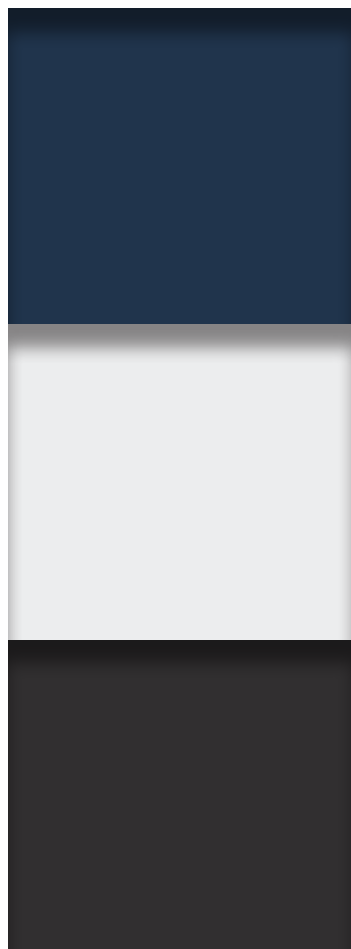




D7F25S733
**PLAYER WIND
 SWEATER**

40% Thermolite
 50% Cotton
 10% Merino wool
 Heavyweight layer, Wind-resistant
 lined sweater, Full Milano stitch,
 Abrasion resistant nylon shoulder
 patches, Diamond cut zipper
S-XXL | DGW5999

THERMOLITE
 EcoMode



HALO
 HEATHER
 HAHT

MICROCHIP
 HEATHER
 MICH

BLACK
 BLK



D7S26J923
**GLENBEG
HEATHERED
PACKABLE HOOD
JACKET**

77% Nylon
23% Spandex
4-way stretch knit body fabric
with woven overlay, Center front
diamond cut two-way zipper,
Front-zip pockets, Zip pocket at
right chest, Dunning heatseal
logo at center back neck

S-XXL | DGW59421



4-WAY
STRETCH



WATER
RESISTANT



SOFT
HAND



UPF 50+

BLACK
BLK

HALO
HALO



D7F24J590

**GLENBEG 2.0
WATER-RESISTANT
PERFORMANCE
JACKET**

75% Nylon

25% Spandex

4-way stretch knit body fabric
with woven overlay, Center front
diamond cut two-way zipper,
Front-zip pockets, Dunning heat-
seal logo at center back neck

S-XXXL | DGW59411



4-WAY
STRETCH



WATER
RESISTANT



UPF 50+

BLACK
BLK

HALO
HALO



D7F24V595

**GLENBEG 2.0
WATER-RESISTANT
PERFORMANCE
VEST**

75% Nylon

25% Spandex

4-way stretch knit body fabric
with woven overlay, Center front
diamond cut two-way zipper,
Front-zip pockets, Dunning heat-
seal logo at center back neck

S-XXXL | DGW5999



4-WAY
STRETCH



WATER
RESISTANT



UPF 50+

BLACK
BLK

HALO
HALO



Introducing the new

HYDROSEC RAIN JACKET & PANT



Featuring a membrane between two layers of performance fabric, the 3-layer construction of our new rain suit provides a 20k waterproof rating with a 20k breathability rating for optimum dryness and breathability. 4-way stretch and a soft hand feel add a premium level of comfort, while a variety of engineered details enhance playability. Each item is also fully packable for easy and compact storage.

NIGHT
SKY
NTSK

D7S25J301

HYDROSEC RAIN JACKET

74% Polyester
26% Polyurethane

Fully seam sealed rain jacket with rain guard interior collar, Waterproof/breathable to 20k/20k, Ultra 4-way stretch fabric, Self-packable into back pocket, Adjustable sleeve tabs and hem, 2-way waterproof diamond-cut zipper, Dunning reflective heatseal logo at center back neck

S-XXL | DGW59991



4-WAY
STRETCH



WATER
PROOF



BREATHABLE



LIGHT
WEIGHT



UPF 50+



NIGHT
SKY
NTSK

D7S25P514

HYDROSEC RAIN PANT

74% Polyester
26% Polyurethane

Fully seam sealed rain pant, Waterproof/breathable to 20k/20k, Ultra 4-way stretch fabric, Self-packable into back pocket, Adjustable waistband tabs, Waterproof front-zip pockets, Hemmable to four inches, Zip side-seam hems with adjustable tab

S-XXL | DGW59991



4-WAY
STRETCH



WATER
PROOF



BREATHABLE



LIGHT
WEIGHT



UPF 50+



DUNNING

S O C I A L



linkedin.com/company/dunning-golf



[@dunninggolf](https://www.instagram.com/dunninggolf)



facebook.com/dunninggolf



[@dunninggolf](https://twitter.com/dunninggolf)



For Terms & Conditions scan:



PROUDLY ASSOCIATED WITH:



FOR MORE INFORMATION ABOUT DUNNING, CONTACT:

SUSAN SHADE

Executive Vice President, Golf Sales
512-413-0382
susan.shade@tlifestyles.com

RYAN SYLVESTER

NY Office Sales Associate
646-494-0742
ryan.sylvester@tlifestyles.com

CUSTOMER SERVICE

888-247-5187

For a complete list of
regional sales representatives scan:

